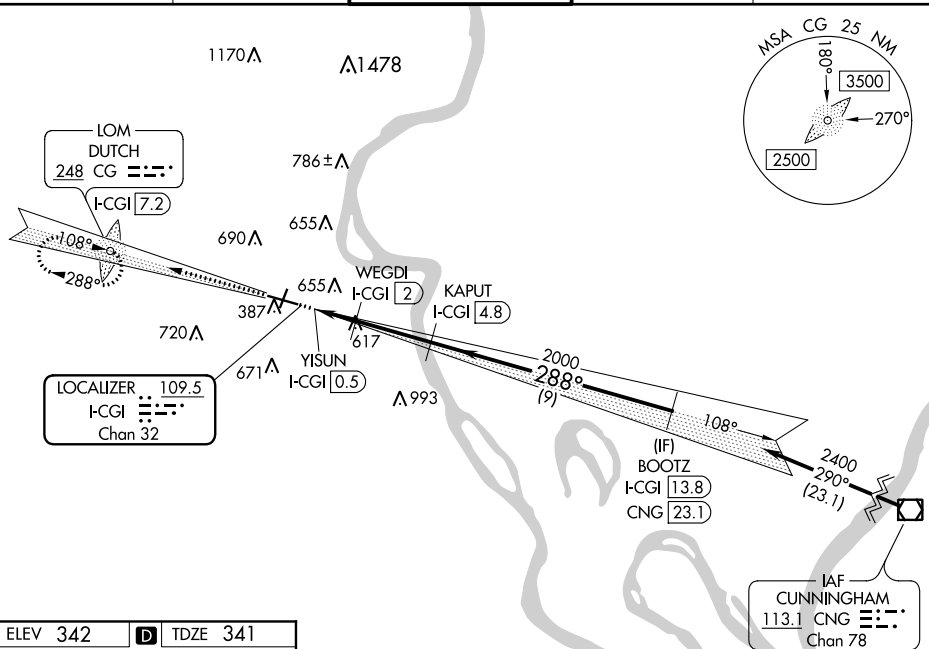


LOC BC RWY 28  
CAPE GIRARDEAU RGNL (CGI)

MISSED APPROACH: Climb to 2400 on I-CGI  
west course (288°) to DUTCH LOM/I-CGI 7.2 DME  
and hold.

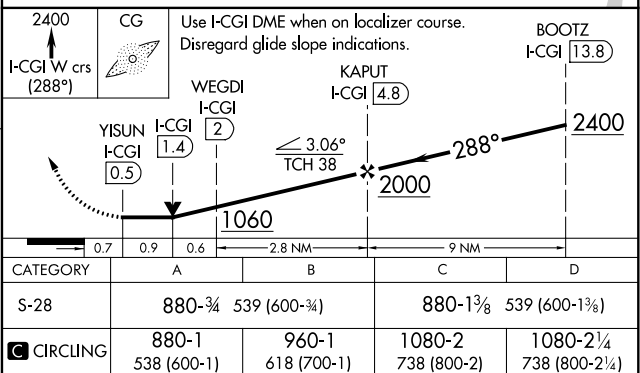
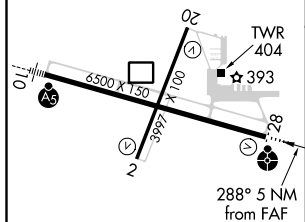
**T**  
**A** Rwy 28 helicopter visibility reduction below  $\frac{3}{4}$  SM NA.

ASOS 120.55	MEMPHIS CENTER 133.65 292.15	CAPE GIRARDEAU TOWER ★ 125.525 (CTAF) 0	GND CON 121.6	UNICOM 122.95
----------------	---------------------------------	--	------------------	------------------



Procedure NA for arrival on CNG VOR/DME  
airway radials 240 CW 346.

## BACK COURSE



MIRL Rwy 2-20 **L**  
HIRL Rwy 10-28 **L**

CAPE GIRARDEAU, MISSOURI  
Amdt 8D 16JUL20

CAPE GIRARDEAU RGNL (CGI)  
LOC BC RWY 28

NC-3, 03 DEC 2020 to 31 DEC 2020