

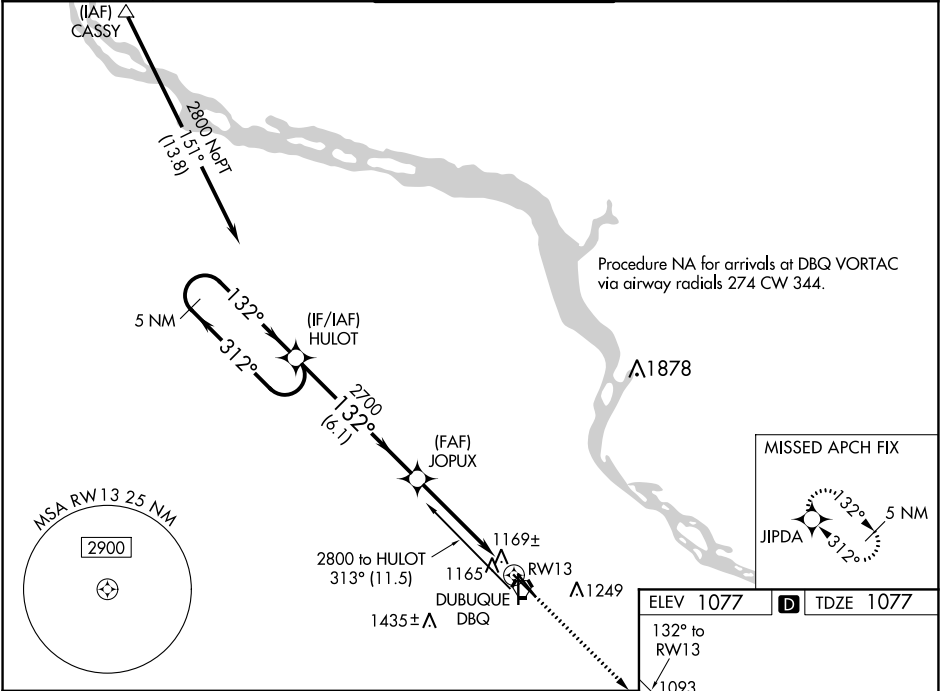
WAAS CH 93700 W13A	APP CRS 132°	Rwy Idg TDZE Apt Elev	6502 1077 1077
--	------------------------	-----------------------------	---

RNAV (GPS) RWY 13

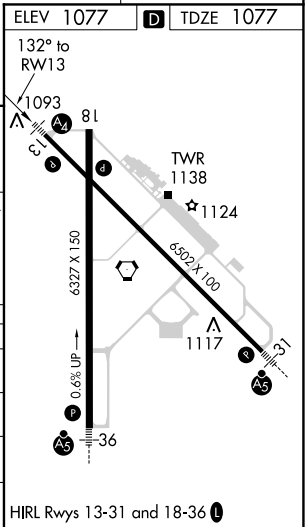
DUBUQUE RGNL (DBQ)

RNP APCH.	Inop table does not apply to LPV and LNAV/VNAV. Baro-VNAV NA when using Monticello altimeter setting. For uncompensated Baro-VNAV systems, LNAV/VNAV NA below -17°C or above 46°C. VDP NA when using Monticello altimeter setting. If local altimeter setting not received, use Monticello altimeter setting and increase all DAs/MDAs 100 feet.	MALS 	MISSED APPROACH: Climb to 3100 direct JIPDA and hold.
-----------	--	----------	--

ATIS 127.25	CHICAGO CENTER 133.95 281.4	DUBUQUE TOWER ★ 119.5 (CTAF) 254.4	GND CON 121.8	UNICOM 122.95
-----------------------	---------------------------------------	--	-------------------------	-------------------------



5 NM Holding Pattern		HULOT		VGSI and RNAV glidepath not coincident (VGSI Angle 3.00/TCH 44).		3100 JIPDA	
2800		312°		132°		132°	
GP 3.00° TCH 50		2700		JOPUX		*1 NM to RW13	
		6.1 NM		3.9 NM		1 NM	
CATEGORY	A	B	C	D			
LPV DA	1393-1 316 (400-1)						
LNAV/VNAV DA	1574-1¾ 497 (500-1¾)						
LNAV MDA	1440-¾ 363 (400-¾)					1440-1¼ 363 (400-1¼)	
CIRCLING	1580-1¾ 503 (600-1¾)			1600-1¾ 523 (600-1¾)		1800-2¼ 723 (800-2¼)	



NC-3, 03 DEC 2020 to 31 DEC 2020

NC-3, 03 DEC 2020 to 31 DEC 2020