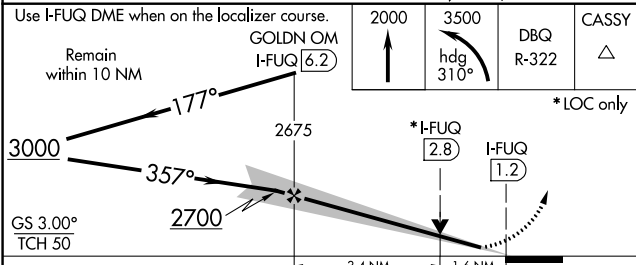
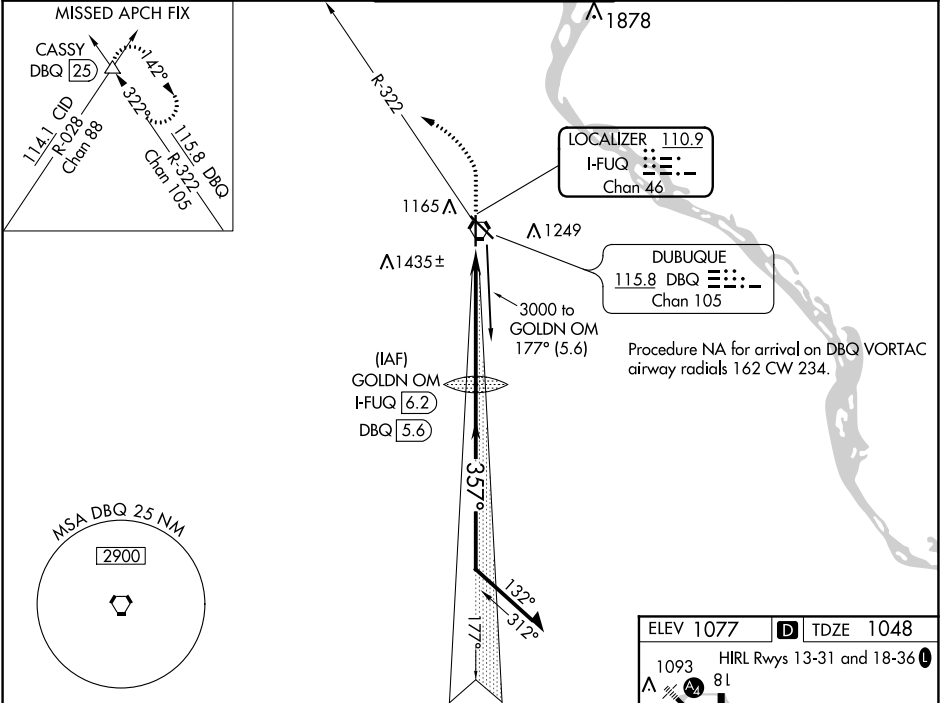


LOC/DME I-FUQ	APP CRS	Rwy Idg	6327
110.9	357°	TDZE	1048
Chan 46		Apt Elev	1077

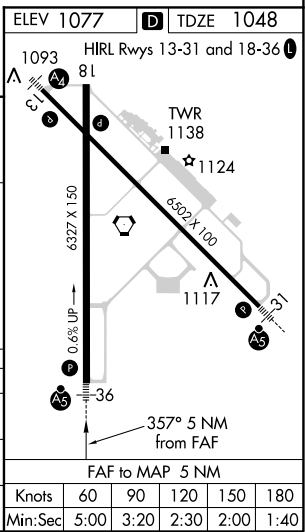
ILS or LOC RWY 36
DUBUQUE RGNL (DBQ)

DME or RADAR required for procedure entry.	MALSR	MISSED APPROACH: Climb to 2000 then climbing left turn to 3500 on heading 310° and DBQ R-322 to CASSY INT/DBQ 25 DME and hold.
# RVR 1800 authorized with use of FD or AP or HUD to DA.		
☁ -34°C/-29°F		

ATIS 127.25	CHICAGO CENTER 133.95 281.4	DUBUQUE TOWER★ 119.5 (CTAF) 0 254.4	GND CON 121.8	UNICOM 122.95
----------------	--------------------------------	--	------------------	------------------



CATEGORY	A	B	C	D
S-ILS 36#		1248/24	200 (200-½)	
S-LOC 36	1580/24	532 (600-½)	1580/55	532 (600-1)
CIRCLING	1580-1 503 (600-1)	1600-1 523 (600-1)	1600-1½ 523 (600-1½)	1800-2¼ 723 (800-2¼)



NC-3, 03 DEC 2020 to 31 DEC 2020

NC-3, 03 DEC 2020 to 31 DEC 2020