

LOC/DME I-JEF	APP CRS	Rwy Idg	6000
110.5	300°	TDZE	549
Chan 42		Apt Elev	549

ILS or LOC RWY 30

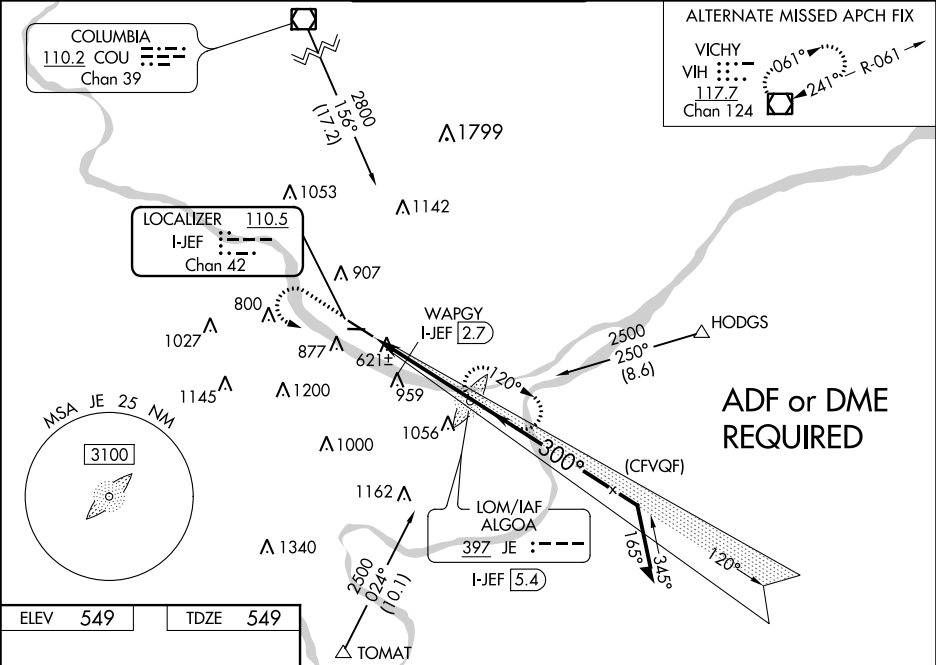
JEFFERSON CITY MEMORIAL (JEF)

**ADF required.** When local altimeter setting not received, use Columbia altimeter setting and increase all DA/MDA 80 feet, and increase S-LOC 30 visibility Cats C/D ¾ SM and increase S-LOC 30 WAPGY fix minimums visibility and Circling Cats A/B/C ¼ SM. VDP NA with Columbia altimeter setting. For inop ALS when using Columbia altimeter setting, increase S-ILS 30 visibility all Cats to ¾ SM and S-LOC 30 visibility Cats C/D to 1¾ SM and S-LOC 30 WAPGY fix minimums, visibility Cats C/D to 1½ SM. Circling Rwy 9 NA at night.

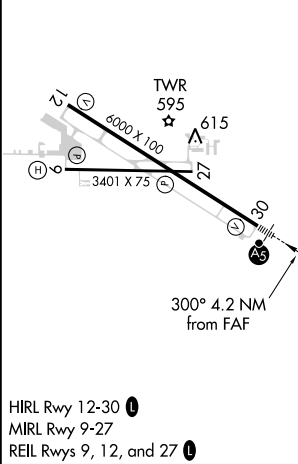
**MALSR**

**MISSED APPROACH:**  
Climb to 1500 then climbing left turn to 2500 direct ALGOA LOM and hold.

ASOS	MIZZU APP CON	JEFFERSON CITY TOWER*	GND CON	UNICOM
133.625	124.375 353.7	125.6 (CTAF) 0	121.7	122.95



ELEV 549	TDZE 549
----------	----------



1500	2500	JE	JE LOM I-JEF 5.4	VGSI and ILS glidepath not coincident (VGSI Angle 3.00/TCH 50). Remain within 10 NM
*1160 when using Columbia altimeter setting. WAPGY I-JEF 2.7				
I-JEF 1.2				
1080*				
1.5 NM 2.7 NM				
CATEGORY A B C D				
S-ILS 30 749-½ 200 (200-½)				
S-LOC 30 1080-½ 531 (600-½) 1080-1 531 (600-1)				
CIRCLING 1320-1 771 (800-1) 1320-2¼ 771 (800-2¼) 1560-3 1011 (1100-3)				
WAPGY FIX MINIMUMS				
S-LOC 30 880-½ 331 (400-½)				
CIRCLING 1320-1 771 (800-1) 1320-2¼ 771 (800-2¼) 1560-3 1011 (1100-3)				