

WAAS CH 56608 W09A	APP CRS 094°	Rwy Idg TDZE 1015 Apt Elev 1026
--	------------------------	---

RNAV (GPS) Y RWY 9

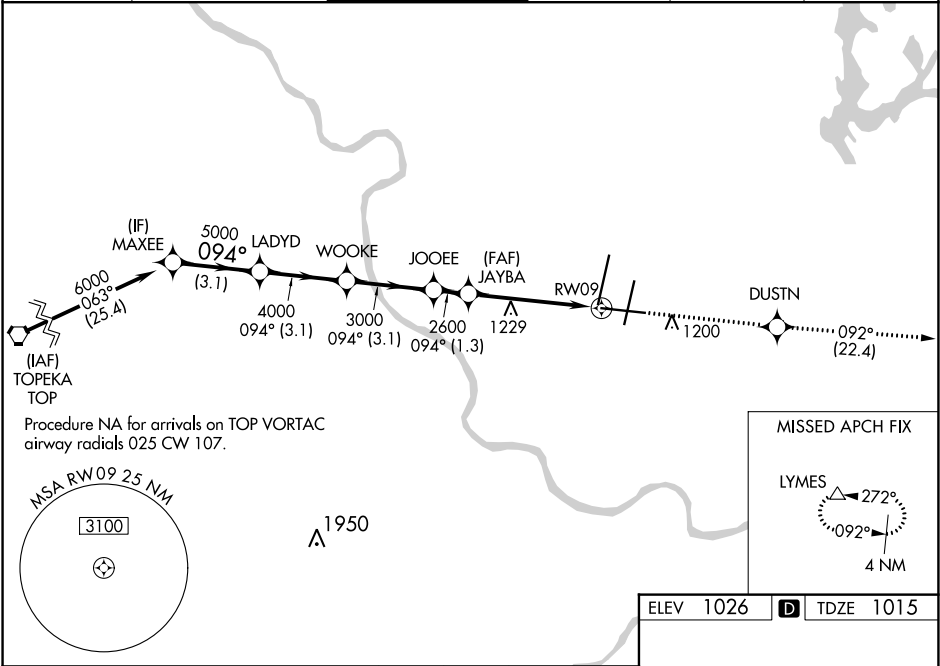
KANSAS CITY INTL (MCI)

Inop table does not apply to LPV and LNAV/VNAV.
For uncompensated Baro-VNAV systems, LNAV/VNAV NA below -20°C (-4°F) or above 54°C (130°F). DME/DME RNP-0.3 NA.
For inop MALSR, increase LNAV Cat A/B visibility to RVR 5000 and Cat C/D/E visibility to 1½ mile.

MALSR

MISSED APPROACH: Climb to 4000 direct DUSTN and on track 092° to LYMES and hold.

D-ATIS 128.375	KANSAS CITY APP CON 120.95 318.1	INTERNATIONAL TOWER 128.2 254.25	GND CON 121.8	CLNC DEL 135.7	CPDLC
--------------------------	--	--	-------------------------	--------------------------	-------



	MAXEE	LADYD	WOOKIE	JOOEE	JAYBA	DUSTN	LYMES
	6000	5000	4000	3000	2600	4000	1229
	094°	094°	094°	094°	094°	092°	092°
	GP 3.00°	TCH 56					
	3.1 NM	3.1 NM	3.1 NM	3.4 NM	1.4 NM		
CATEGORY	A	B	C	D	E		
LPV DA		1315/50	300 (300-1)				
LNAV/VNAV DA		1320/50	305 (300-1)				
LNAV MDA	1500/40	485 (500-¾)	1500/50	485 (500-1)			
CIRCLING	1540-1	514 (600-1)	1540-1½ 514 (600-1½)	1580-2	554 (600-2)		

