

WAAS CH <b>82708</b> <b>W27A</b>	APP CRS <b>274°</b>	Rwy Idg <b>9501</b> TDZE <b>1026</b> Apt Elev <b>1026</b>
--	------------------------	---

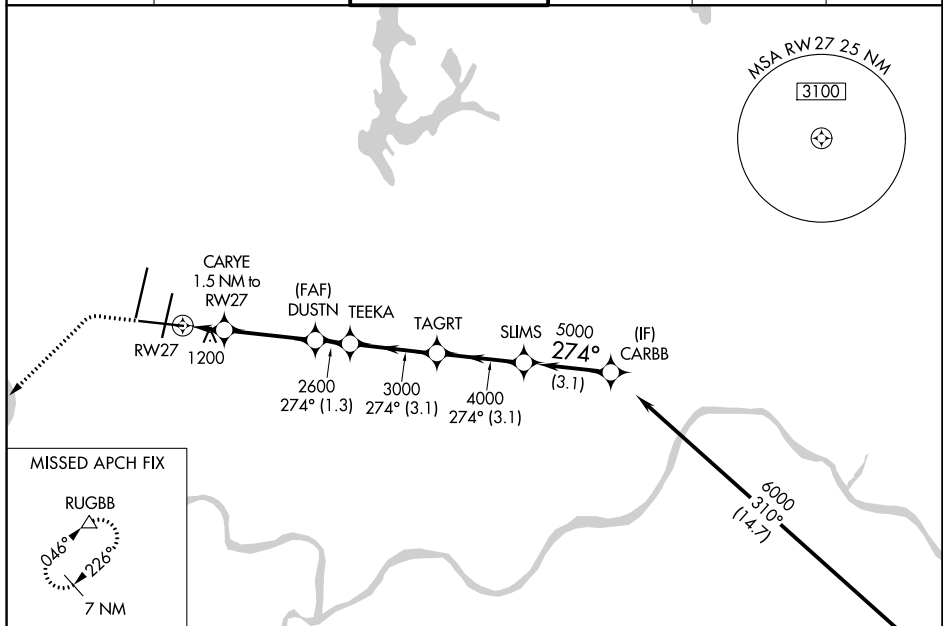
RNAV (GPS) Y RWY 27  
KANSAS CITY INTL (MCI)

**T** DME/DME RNP-0.3 NA. For uncompensated Baro-VNAV systems, LNAV/VNAV NA below -20°C (-4°F) or above 54° C (130°F).  
For inop MALS, increase LNAV/VNAV all Cats visibility to 1½ mile.  
# RVR 1800 authorized with use of FD or AP or HUD to DA.

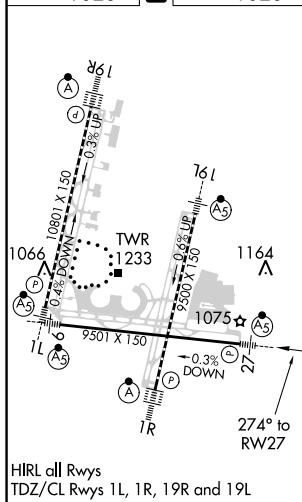
MALSR

MISSED APPROACH: Climb to 1600 then climbing left turn 4000 direct RUGBB and hold.

D-ATIS <b>128.375</b>	KANSAS CITY APP CON <b>120.95 318.1</b>	INTERNATIONAL TOWER <b>128.2 254.25</b>	GND CON <b>121.8</b>	CLNC DEL <b>135.7</b>	CPDLC
--------------------------	--	--	-------------------------	--------------------------	-------



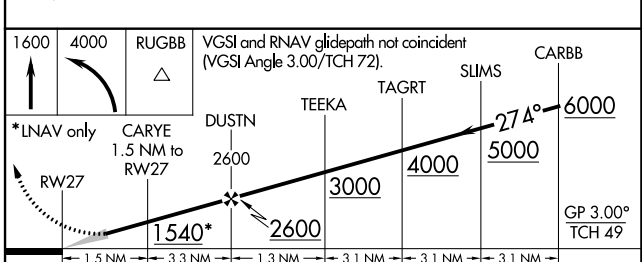
ELEV 1026	<b>D</b>	TDZE 1026
-----------	----------	-----------



$\Delta_{2049} \Delta_{2049} \Delta_{2049}$

Procedure NA for arrivals  
 on ANX VORTAC airway  
 radials 235 CW 358.

(IAF)  
 NAPOLEON  
 ANX



CATEGORY	A	B	C	D	E
LPV DA #	1226/24 200 (200-½)				
LNAV/DA VNAV	1495/60 469 (500-1¼)				
LNAV MDA	1460/24	434 (500-½)	1460/40	434 (500-¾)	
CIRCLING	1540-1	514 (600-1)	1540-1½ 514 (600-1½)	1580-2	554 (600-2)