

WAAS CH 42808 W01B	APP CRS 011°	Rwy Idg 10801 TDZE 1014 Apt Elev 1027
--	------------------------	--

RNAV (GPS) Y RWY 1L

KANSAS CITY INTL (MCI)

T For uncompensated Baro-VNAV systems, LNAV/VNAV NA below -18°C (0°F) or above 54°C (130°F). Simultaneous approach authorized. Use of FD or AP providing RNAV track guidance required during simultaneous operations. LNAV procedure NA during simultaneous operations. DME/DME RNP-0.3 NA. For inop ALS, increase LNAV Cat C/D visibility to RVR 5500.

MALSR



MISSED APPROACH:
Climb to 2000 then
climbing left turn to
4000 direct BOWLR
and hold.

D-ATIS 128.375	KANSAS CITY APP CON 120.95 318.1	INTERNATIONAL TOWER 128.2 254.25	GND CON 121.8	CLNC DEL 135.7	CPDLC
--------------------------	--	--	-------------------------	--------------------------	-------

MISSED APCH FIX



MSA RVT 23 NM

3100



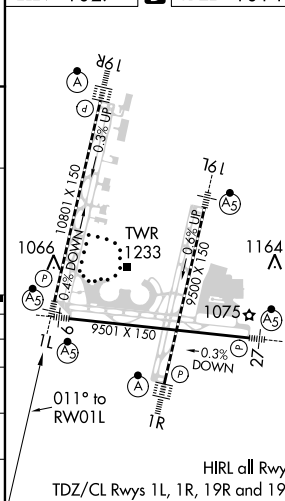
Procedure NA for arrival on 1
airway radials 264 CW 012.

[illegible]

CATEGORY		A	B	C	D
LPV	DA	1214/18		200 (200-½)	
LNAV/ VNAV	DA	1331/24		317 (400-½)	
LNAV	MDA	1380/24	366 (400-½)	1380/35	366 (400-¾)
CIRCLING		1540-1	513 (600-1)	1540-1½ 513 (600-1½)	1580-2 553 (600-2)

ELEV 1027	D	TDZE 1014
-----------	----------	-----------

D TDZE 1014



KANSAS CITY, MISSOURI

Amdt 2B 07DEC17

39°18'N-94°43'W

KANSAS CITY INTL (MCI)

RNAV (GPS) Y RWY 1L

NC-3, 03 DEC 2020 to 31 DEC 2020