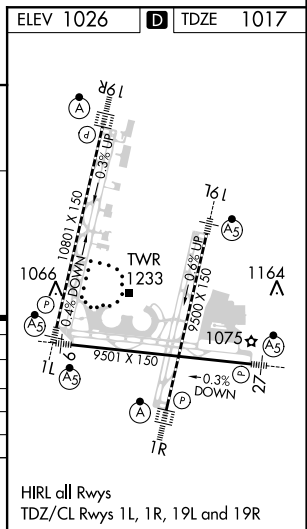


ILS RWY 1R (CAT II & III)  
KANSAS CITY INTL (MCI)

ALSF-2

ND CON  
121-8



HIRL all Rwy's  
TDZ/CL Rwy's 1L, 1R, 19L and 19R

CATEGORY II & III ILS - SPECIAL AIRCREW  
& AIRCRAFT CERTIFICATION REQUIRED

NC-3. 03 DEC 2020 to 31 DEC 2020