

VOR/DME MCW 114.9 Chan 96	APP CRS 356°	Rwy Idg 6401 TDZE 1193 Apt Elev 1214
---	------------------------	---

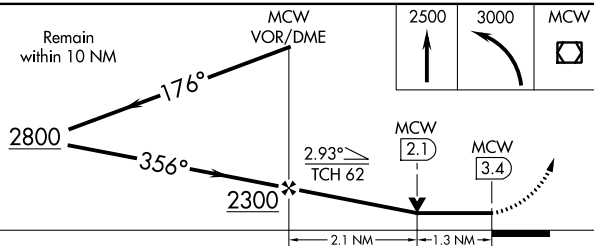
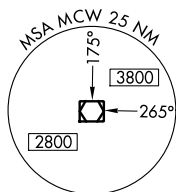
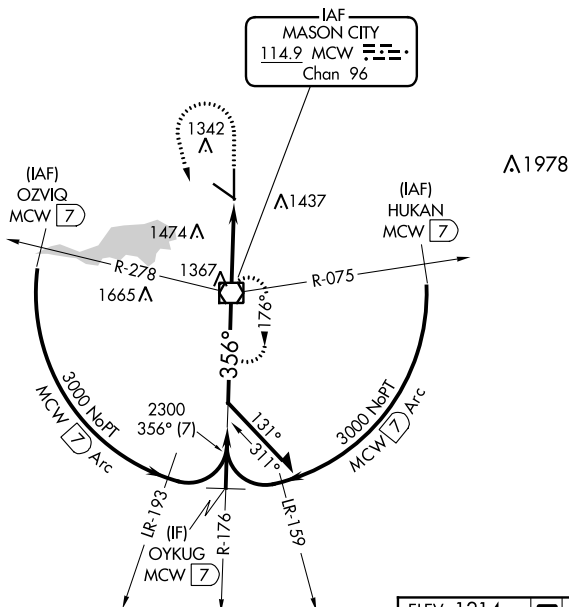
VOR RWY 36
MASON CITY MUNI (MCW)

A VDP NA with Charles City altimeter setting. When local altimeter setting not received, use Charles City altimeter setting and increase all MDA 100 feet and increase S-36 Cat C/D and Circling Cat C visibility $\frac{1}{4}$ mile.



MISSED APPROACH: Climb to 2500 then climbing left turn to 3000 direct MCW VOR/DME and hold.

ASOS 120.3	MINNEAPOLIS CENTER 127.3 257.675	UNICOM 123.0 (CTAF) 0
----------------------	--	---------------------------------



CATEGORY	A	B	C	D
S-36	1640- ³ / ₄	447 (500- ³ / ₄)	1640- ⁷ / ₈	447 (500- ⁷ / ₈)
CIRCLING	1660-1 446 (500-1)	1680-1 466 (500-1)	1760-1 ¹ / ₂ 546 (600-1 ¹ / ₂)	1780-2 566 (600-2)

