


LOC/DME I-SGF	APP CRS	Rwy Idg	7003
109.9	019°	TDZE	1265
Chan 36		Apt Elev	1268

ILS or LOC RWY 2
SPRINGFIELD-BRANSON NATIONAL (SGF)

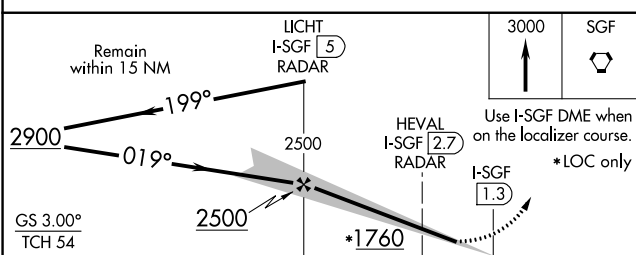
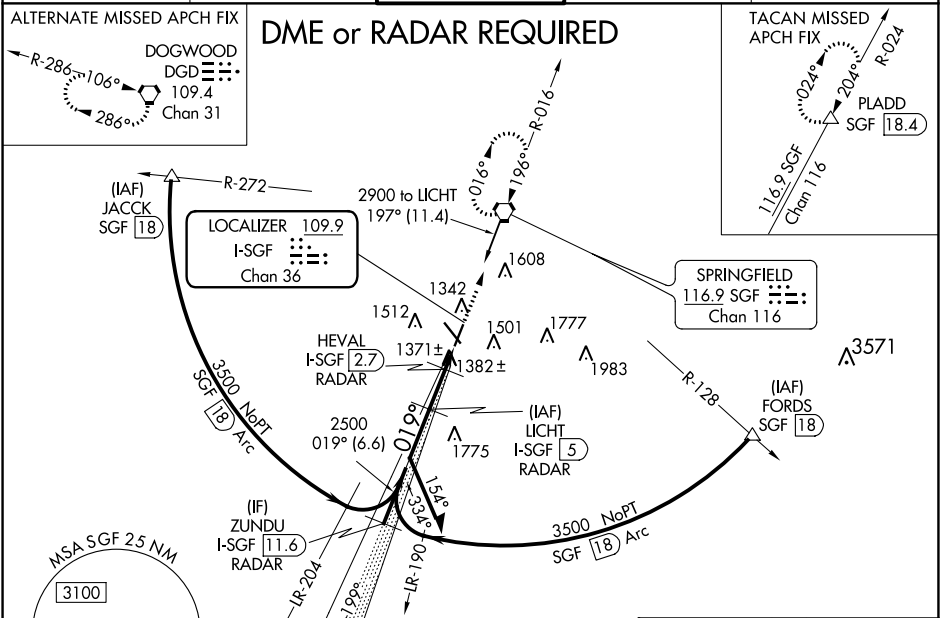
⚠ DME or RADAR Required. For inop MALSR, increase S-ILS 2 Cat E visibility to RVR 4000, and S-LOC 2 Cat E visibility to 1¼ mile.
#RVR 1800 authorized with use of FD or AP or HUD to DA.

MALSR



MISSED APPROACH: Climb to 3000 direct SGF VORTAC and hold (TACAN aircraft continue on SGF VORTAC R-024 to PLADD/SGF 18.4 DME and hold northeast, right turn, 204° inbound).

ATIS 135.125	SPRINGFIELD APP CON 121.1 290.5	SPRINGFIELD TOWER 119.9 257.8	GND CON 121.9 251.15	CLNC DEL 123.675
------------------------	---	---	--------------------------------	----------------------------



ELEV 1268 **D** TDZE 1265

HIRL Rwy 2-20 and 14-32
REIL Rwy 32

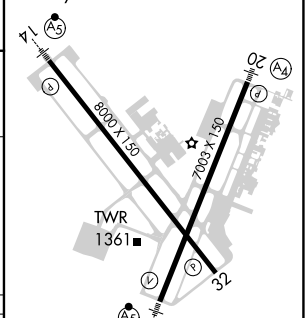


Diagram details: 8000 X 150, 7003 X 130, TWR 1361, 019° 3.7 NM from FAF.

	Knots	60	90	120	150	180
Min:Sec	3:42	2:28	1:51	1:29	1:14	

CATEGORY	A	B	C	D	E
S-ILS 2	#1465/24 200 (200-½)				
S-LOC 2	1700/24	435 (500-½)	1700/40	435 (500-¾)	
CIRCLING	1760-1 492 (500-1)	1820-1 552 (600-1)	1820-1½ 552 (600-1½)	1920-2 652 (700-2)	2080-3 812 (900-3)

NC-3, 03 DEC 2020 to 31 DEC 2020

NC-3, 03 DEC 2020 to 31 DEC 2020