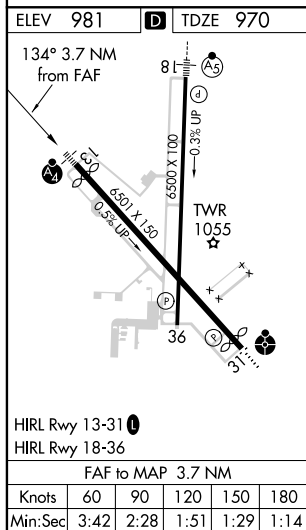


ILS or LOC/NDB RWY 13
JOPLIN RGNL (JLN)

MISSED APPROACH: Climb to 3100 on I-JLN LOC SE course to HOVIL INT and hold.

UNICOM
122.95

CATEGORY	A	B	C	D
S-ILS 13		1170-¾	200 (200-¾)	
S-LOC 13		1300-¾	330 (400-¾)	1300-1 330 (400-1)
C CIRCLING	1460-1 479 (500-1)	1500-1 519 (600-1)	1540-1½ 559 (600-1½)	1600-2 619 (700-2)