

WAAS CH 78119 W04A	APP CRS 045°	Rwy Idg TDZE 1137 Apt Elev 1148
--	------------------------	---

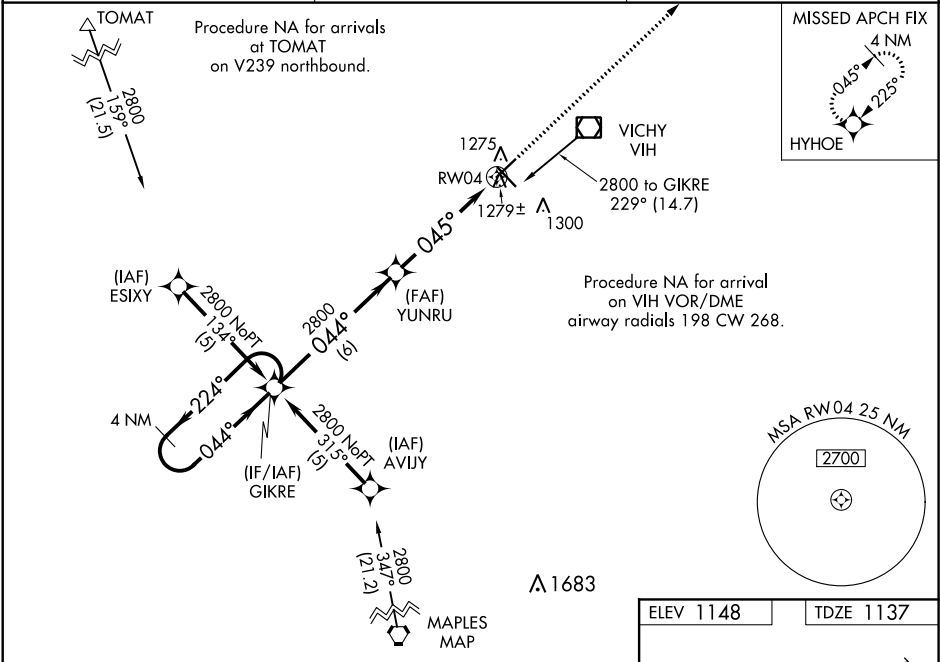
RNAV (GPS) RWY 4

ROLLA NATIONAL (VIH)

▼ For uncompensated Baro-VNAV systems, LNAV/VNAV NA below -17°C (2°F) or above 46°C (114°F). DME/DME RNP-0.3 NA. Visibility reduction by helicopters NA. When local altimeter setting not received, use Fort Leonard Wood altimeter setting and increase all DA 69 feet and all MDA 80 feet, increase LPV and LNAV/VNAV all Cats visibility, and LNAV Cat D visibility ¼ mile. Baro-VNAV and VDP NA with Fort Leonard Wood altimeter setting.

⚠ MISSED APPROACH: Climb to 3000 direct HYHOE and hold.

ASOS 119.025	KANSAS CITY CENTER 128.35 284.675	UNICOM 123.0 (CTAF) 0
------------------------	---	---------------------------------



4 NM Holding Pattern		GIKRE	YUNRU	3000	HYHOE
		2800	2800	*LNAV only	
2800 ← 224°		044° →	044° →	*1.1 NM to RW04	
GP 3.00°		2800	045°	RW04	
TCH 40		6 NM	3.9 NM	1.1 NM	
CATEGORY	A	B	C	D	
LPV DA	1387-1		250 (300-1)		
LNAV/VNAV DA	1549-1½		412 (500-1½)		
LNAV MDA	1540-1	403 (400-1)	1540-1¼	403 (400-1¼)	
CIRCLING	1580-1 432 (500-1)	1600-1 452 (500-1)	1600-1½ 452 (500-1½)	1700-2 552 (600-2)	

