

NOB NOSTER, MISSOURI

## ILS or LOC Y RWY 1

LOC I-SZL <b><u>110.3</u></b>	APCH CRS <b>010°</b>	Rwy Idg <b>12,400</b> TDZE <b>837</b> Arpt Elev <b>871</b>
----------------------------------	-------------------------	--

AL-496 (USAF)

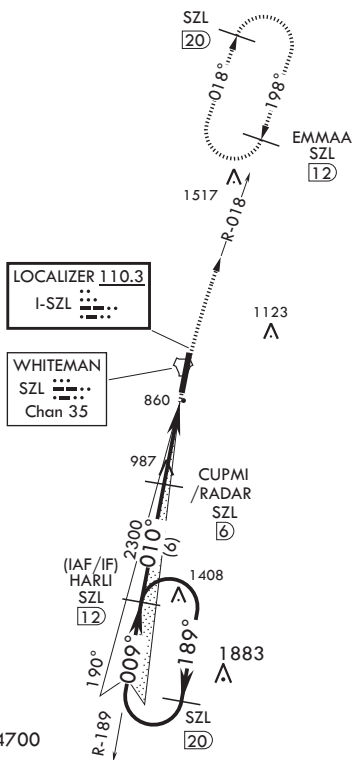
WHITEMAN AFB (KSZL)

**T** \* When ALS inop, increase CAT ABCDE RVR to 40, vis to 3/4 mile.  
 \*\* When ALS inop, increase CAT AB RVR to 55, vis to 1 mile; CAT CDE vis to 1 1/4 miles.  
 \*\*\* Circling not authorized W of Rwy 1-19.

ALSF-1

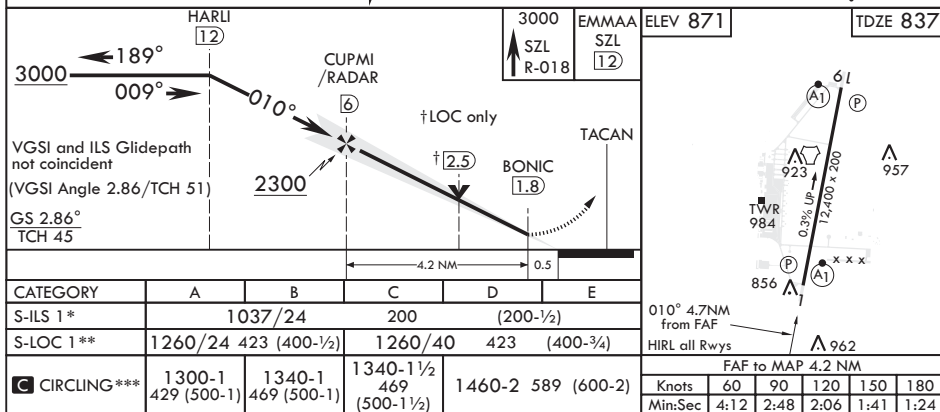
**MISSED APPROACH:** Climb to 3000  
via SZL TACAN R-018 to EMMAA and  
hold.

ATIS 118.725 239.025	APP CON 127.45 284.0	TOWER★ 132.4 318.8	GND CON 128.275 275.8	CLNC DEL 121.75 335.8	ASR
-------------------------	-------------------------	-----------------------	--------------------------	--------------------------	-----



**RADAR or DME  
REQUIRED**

EMERG SAFE ALT 100 NM 4700



NOB NOSTER, MISSOURI

38°44'N - 93°33'W

WHITEMAN AFB (KSZL)

Amdt 1 10OCT19

## ILS or LOC Y RWY 1