

## TACAN RWY 30L

VORTAC STL <b>117.4</b> Chan <b>121</b>	APCH CRS <b>318°</b>	Rwy Idg <b>10,818</b> TDZE <b>583</b> Arpt Elev <b>618</b>
---	-------------------------	--

AL-360 [USAF]

ST. LOUIS LAMBERT INTL (KSTL)

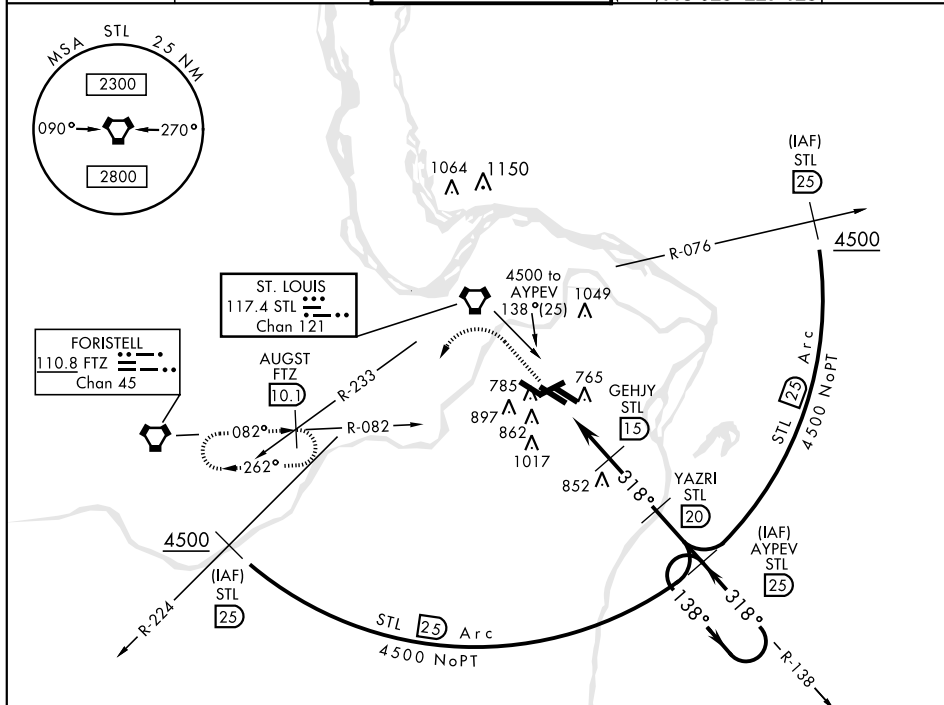


\* Inoperative table does not apply.

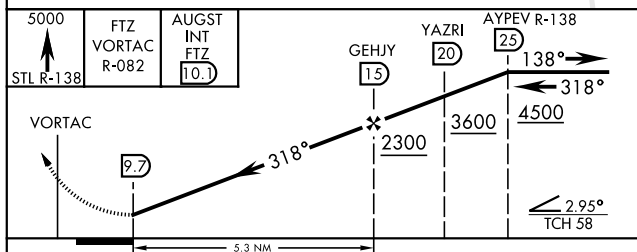


**MISSED APPROACH:** Climb to 5000 via STL R-138 and FTZ VORTAC R-082 to AUGST INT/FTZ 10.1 DME and hold.

ATIS		ST. LOUIS APP CON		ST. LOUIS TOWER			GND CON		CLNC DEL	
				N	S		Inbnd	(Outbnd)		
125.025	379.925	121.02	338.25	120.05	132.475	118.5	121.9	348.6		
				284.6	239.275	257.7	121.65	377.175	119.5	363.1
							(West)	18.925	227.125	



EMERG SAFE ALT 100 NM 3500



CATEGORY	A	B	C	D	E
S-30L *	1100/50 517 (500-1)	1100-1½ 517(500-1½)	1100-1¾ 517 (500-1¾)		
CIRCLING	NOT AUTHORIZED				

ELEV 618

TDZE 583

Rwy 6-24 7607 x 150  
 Rwy 11-29 9001 x 150  
 Rwy 12L-30R 9003 x 150  
 Rwy 12R-30L 11,019 x 200

Rwy 12R Idg 10,552'  
 Rwy 30L Idg 10,818'

0.7% DOWN  
 0.7% UP  
 0.7% DOWN  
 0.7% DOWN

A5 P A4 P A P A P A5 P A5 P A5 P

TWR 774

HIRL AII Rwy  
 REIL Rwy 12L  
 TDZ/CL Rwy 11-29,  
 12L-30R, and 12R

318° 5.3 NM  
 from FAF

ST. LOUIS, MISSOURI

38°45'N-90°22'W

ST. LOUIS LAMBERT INTL (KSTL)

TACAN RWY 30L

NC-3, 03 DEC 2020 to 31 DEC 2020

NC-3, 03 DEC 2020 to 31 DEC 2020