

WAAS CH 73000 W30A	APP CRS 303°	Rwy Idg 9003 TDZE 605 Apt Elev 618
--	------------------------	---

RNAV (GPS) Y RWY 30R
ST LOUIS LAMBERT INTL (STL)

T For uncompensated Baro-VNAV systems, LNAV/VNAV NA below -15°C (5°F) or above 54°C [130°F]. DME/DME RNP-0.3 NA. For inop ALS, increase LPV Cat E visibility to RVR 4000, LNAV/VNAV Cat Cts visibility to 4500, LNAV Cat D visibility to RVR 6000, and LNAV Cat E visibility to 1½ SM. Simultaneous approach authorized with RW 29. LNAV procedure NA during simultaneous operations. Use of FD or AP required during simultaneous operations.

ALSF-2

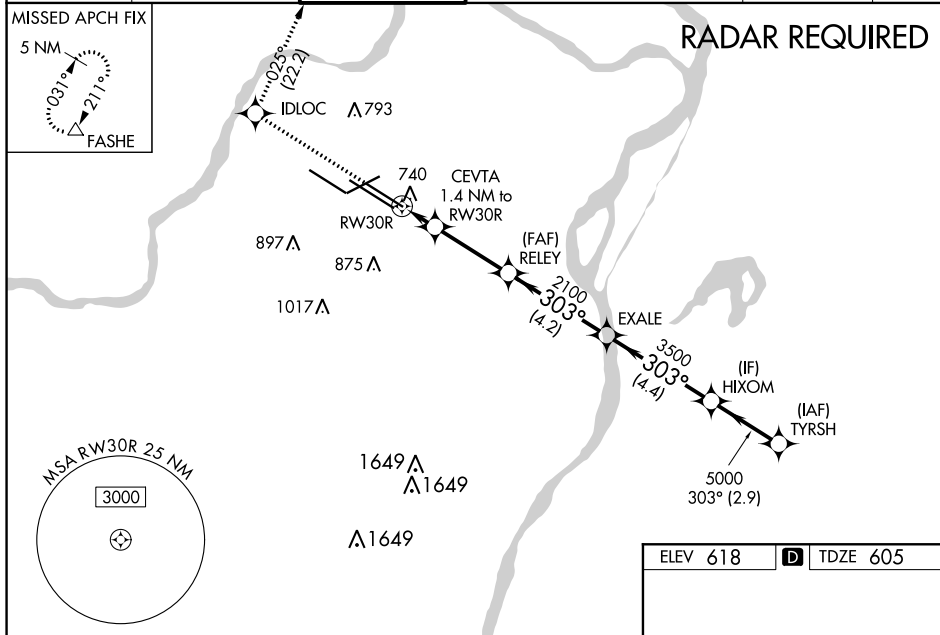


MISSED APPROACH:
Climb to 3000 direct
IDLOC and on track 025°
to FASHE and hold.

D-ATIS 125.025 379.925	ST. LOUIS APP CON 132.125 360.6	ST. LOUIS TOWER 120.05 284.6	GND CON 121.9 348.6 (Inbound) 121.65 377.175 (Outbound) 118.925 227.125 (Rwy 11/29)	CLNC DEL 119.5 363.1	CPDLC
--	---	--	---	--------------------------------	-------

MISSED APCH FIX

RADAR REQUIRED



3000 ↑	IDLOC ✱	tr 025° △					
*LNAV only							
CEVTA 1.4 NM to RW30R		RELEY 2100	EXALE 3500	HIXOM 5000	TYRSH 5000	GP 3.00° TCH 57	
1.4		3.1 NM	4.2 NM	4.4 NM	2.9 NM		
CATEGORY		A	B	C	D	E	
LPV	DA	805/18 200 (200-½)					
LNAV/ VNAV	DA	901/24 296 (300-½)					
LNAV	MDA	1000/24	395 (400-½)	1000/35	395 (400- ⅘)		

ELEV 618

TDZE 605

Rwy 6-24 7607 X 150

Rwy 11-29 9001 X 150

Rwy 12L-30R 9003 X 150

Rwy 12R-30L 11019 X 200

303° to RW30R

HIRL all Rwys

REIL Rwy 12L

TDZ/CL Rwys 11, 12L, 12R, 29, and 30R