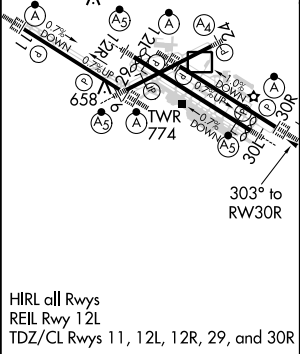
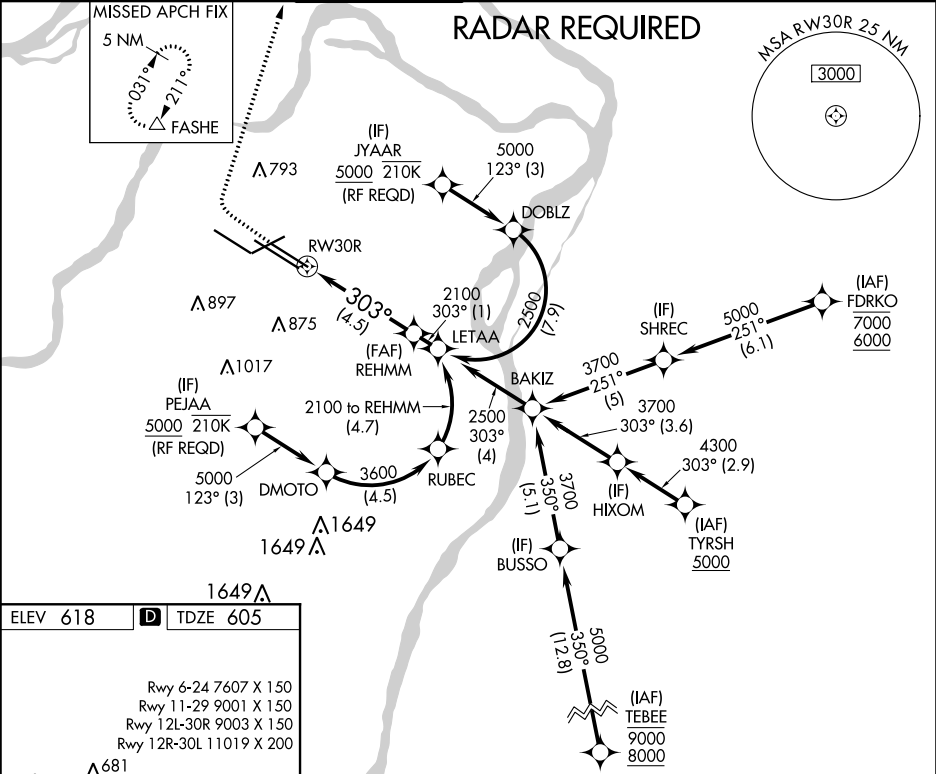





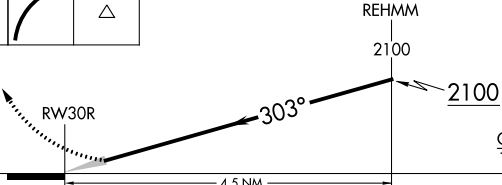
APP CRS	Rwy Idg	9003
303°	TDZE	605
	Apt Elev	618

RNAV (RNP) Z RWY 30R

ST LOUIS LAMBERT INTL (STL)

▼ For uncompensated Baro-VNAV systems, procedure NA below -16°C (4°F) or above 54°C (130°F). GPS required. Simultaneous approach authorized with Rwy 29, except for arrivals at JYAAR and PEJAA. Use of FD or AP required during simultaneous operations. For inop ALS, increase RNP 0.30 all Cats visibility to RVR 6000.				ALSF-2 	MISSED APPROACH: Climb to 1100 then climbing right turn to 3000 direct FASHE and hold.
D-ATIS 125.025 379.925	ST. LOUIS APP CON 132.125 360.6	ST. LOUIS TOWER 120.05 284.6	GND CON 121.9 348.6 (Inbound) 121.65 377.175 (Outbound) 118.925 227.125 (Rwy 11/29)	CLNC DEL 119.5 363.1	CPDLC



1100	3000	FASHE	See planview for multiple IF locations.			
						
			REHMM	2100	2100	GP 3.00° TCH 57
CATEGORY	A	B	C	D		
RNP 0.30 DA	969/40 364 (400-¾)					
AUTHORIZATION REQUIRED						