

APP CRS	Rwy Idg	9001
303°	TDZE	580
	Apt Elev	618

RNAV (RNP) Z RWY 29

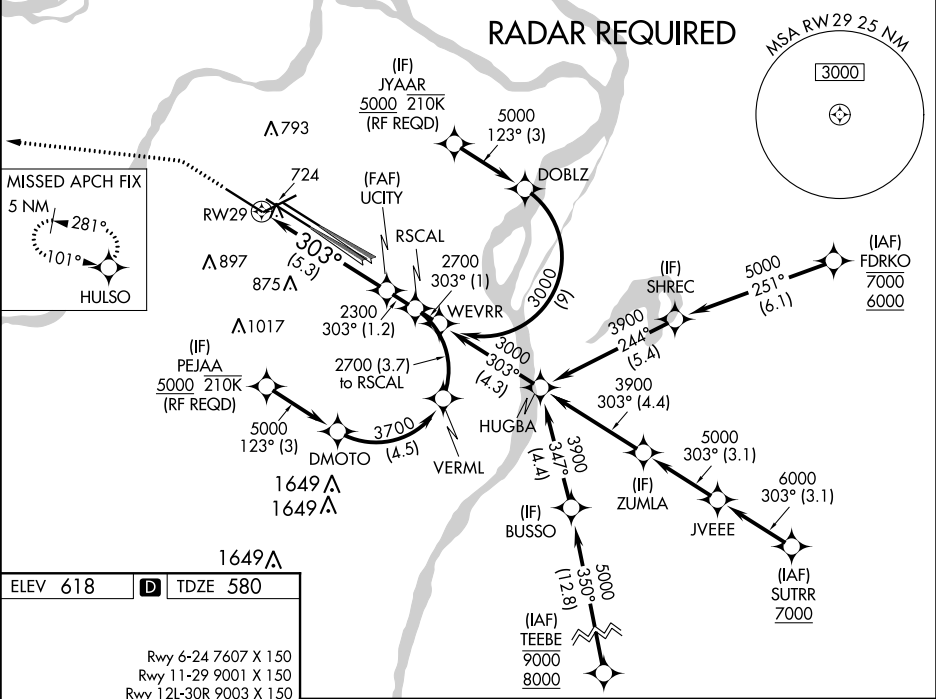
ST LOUIS LAMBERT INTL (STL)

For uncompensated Baro-VNAV systems, procedure NA below -16°C (4°F) or above 54°C (130°F). Simultaneous approach authorized with Rwy 30L/R. Use of FD or AP providing RNAV track guidance required during simultaneous operations. GPS required. For inop ALS, increase RNP 0.12 all Cats visibility to RVR 6000, increase RNP 0.17 all Cats visibility to 1½, and increase RNP 0.30 all Cats visibility to 1¾.

ALSF-2

MISSED APPROACH: Climb to 1100 then climbing left turn to 3000 direct HULSO and hold.

D-ATIS 125.025 379.925	ST. LOUIS APP CON 132.125 360.6	ST. LOUIS TOWER 132.475 239.275	GND CON 121.9 348.6 (Inbound) 121.65 377.175 (Outbound) 118.925 227.125 (Rwy 11/29)	CLNC DEL 119.5 363.1	CPDLC
------------------------------	------------------------------------	------------------------------------	----------------------------------------------------------------------------------------------	-------------------------	-------



ELEV 618

TDZE 580

Rwy 6-24 7607 X 150  
Rwy 11-29 9001 X 150  
Rwy 12L-30R 9003 X 150  
Rwy 12R-30L 11019 X 200

HIRL all Rwys  
REIL Rwy 12L  
TDZ/CL Rwys 11, 12L, 12R, 29, and 30R

1100

3000

HULSO

VGSI and RNAV glidepath not coincident.  
(VGSI Angle 3.00°/TCH 73).

CATEGORY	A	B	C	D
RNP 0.12 DA		963/50	383 (400-1)	
RNP 0.17 DA		1035/50	455 (500-1)	
RNP 0.30 DA		1088/60	508 (500-1½)	

AUTHORIZATION REQUIRED