

| | | |
|---------|----------|------|
| APP CRS | Rwy Idg | 9003 |
| 123° | TDZE | 541 |
| | Apt Elev | 618 |

RNAV (RNP) Z RWY 12L

ST LOUIS LAMBERT INTL (STL)

▼

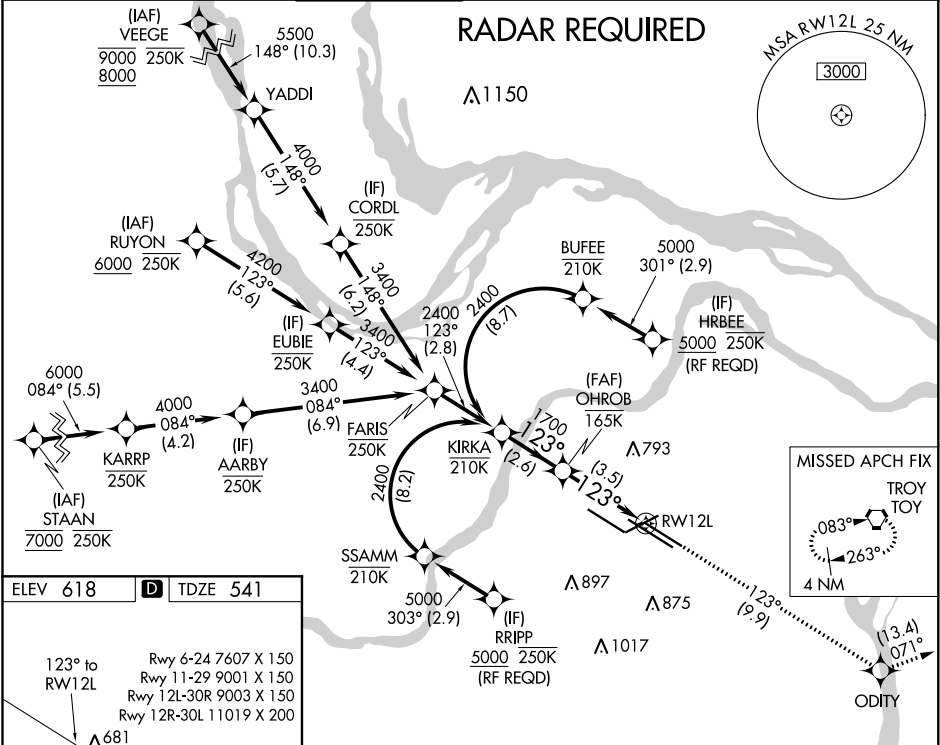
For uncompensated Baro-VNAV systems, procedure NA below -16°C (4°F) or above 54°C (130°F). GPS required. For inop ALS, increase RNP 0.30 all Cats visibility to 1 3/4 SM. Simultaneous approach authorized with Rwy 11, except for arrivals at RIPP and HRBEE. Use of FD or AP required during simultaneous operations.

ALSF-2

A

MISSED APPROACH: Climb to 3000 on track 123° to ODITY and on track 071° to TOY VORTAC and hold.

| | | | | | |
|---------|-------------------|-----------------|-----------------------------|-------------|-------|
| D-ATIS | ST. LOUIS APP CON | ST. LOUIS TOWER | GND CON | CLNC DEL | CPDLC |
| 125.025 | 132.125 360.6 | 120.05 284.6 | 121.9 348.6 (Inbound) | 119.5 363.1 | |
| 379.925 | | | 121.65 377.175 (Outbound) | | |
| | | | 118.925 227.125 (Rwy 11/29) | | |



ELEV 618

D

TDZE 541

123° to RWY12L

Rwy 6-24 7607 X 150

Rwy 11-29 9001 X 150

Rwy 12L-30R 9003 X 150

Rwy 12R-30L 11019 X 200

HIRL all Rwys

REIL Rwy 12L

TDZ/CL Rwys 11, 12L, 12R, 29, and 30R

KIRKA

OHROB

3000

ODITY

tr 071°

TOY

2400

123°

1700

See planview for multiple IF locations.

GP 3.00°

TCH 54

2.6 NM

3.5 NM

| | | | | |
|-------------|-------------------------|---|---|---|
| CATEGORY | A | B | C | D |
| RNP 0.30 DA | 1043/60 502 (500-1 1/4) | | | |

AUTHORIZATION REQUIRED