

WAAS CH 87021 W24A	APP CRS 244°	Rwy Idg TDZE 534 Apt Elev 618
--	------------------------	---

RNAV (GPS) RWY 24

ST LOUIS LAMBERT INTL (STL)

▼

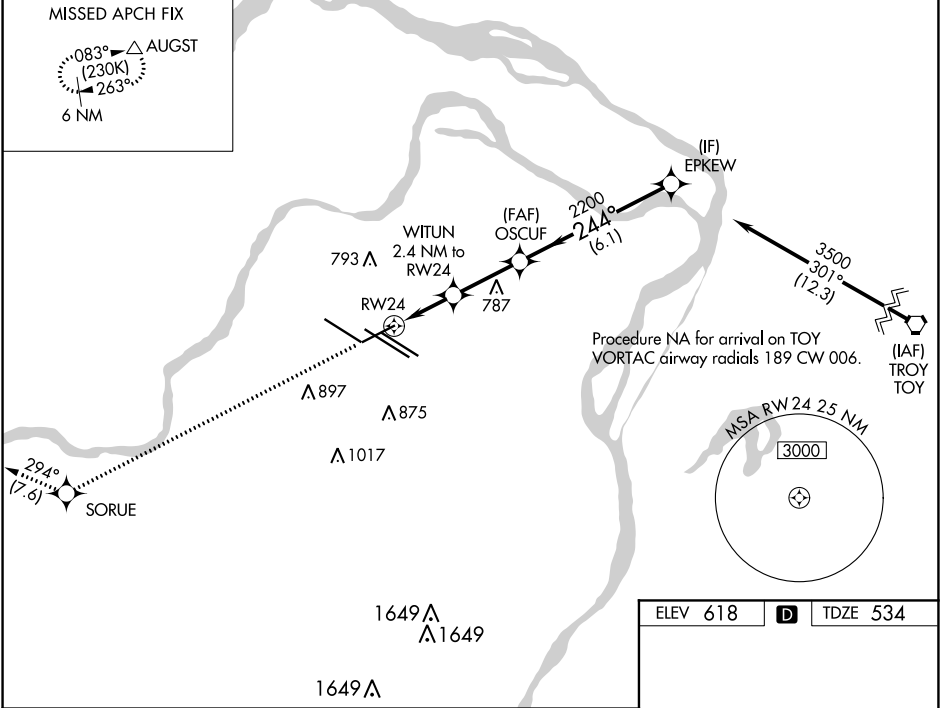
For uncompensated Baro-VNAV systems, LNAV/VNAV NA below -16°C (4°F) or above 54°C (130°F). Rwy 24 helicopter visibility reduction below ¾ SM NA. DME/DME RNP-0.3 NA. For inop ALS, increase LNAV/VNAV all Cats visibility to 1¾ and LNAV Cats C, D and E visibility to 1½.

MALS

MISSED APPROACH:

Climb to 3000 direct SORUE and on track 294° to AUGST and hold.

D-ATIS 125.025 379.925	ST. LOUIS APP CON 132.125 360.6	ST. LOUIS TOWER 120.05 284.6	GND CON 121.9 348.6 (Inbound) 121.65 377.175 (Outbound) 118.925 227.125 (Rwy 11/29)	CLNC DEL 119.5 363.1	CPDLC
--	---	--	---	--------------------------------	-------



3000 ↑	SORUE ✱	tr 294°	AUGST △					
*LNAV only								
<p>Diagram details: A flight path starts at RW24 (indicated by a dashed line). It proceeds to a point 1.6 NM from RW24. From there, it goes 0.8 NM to WITUN. WITUN is 2.4 NM from OSCUF. OSCUF is marked with a cross and has two labels: 2200 and 2240. The path then continues to EPKEW, which is 3500. The distance from OSCUF to EPKEW is 6.1 NM. The path is labeled 224° and 2200. The final segment is labeled 3500. The diagram also shows a 1340* label near WITUN. The path is labeled GP 3.00° TCH 50.</p>								
CATEGORY				A	B	C	D	E
LPV DA			734/40	200 (200-¾)				
LNAV/VNAV DA			931/50	397 (400-1)				
LNAV MDA	1080/40	546 (500-¾)	1080-1¾		546 (500-1¾)			

ELEV 618 D TDZE 534

HIRL all Rwys
REIL Rwy 12L
TDZ/CL Rwys 11, 12L, 12R, 29, and 30R