

LOC/DME I-OGZ <b>111.95</b> Chan <b>56(Y)</b>	APP CRS <b>123°</b>	Rwy Idg TDZE <b>618</b> Apt Elev <b>618</b>	<b>ILS RWY 11 (CAT II &amp; III)</b> ST LOUIS LAMBERT INTL (STL)	
---	------------------------	---	---	--

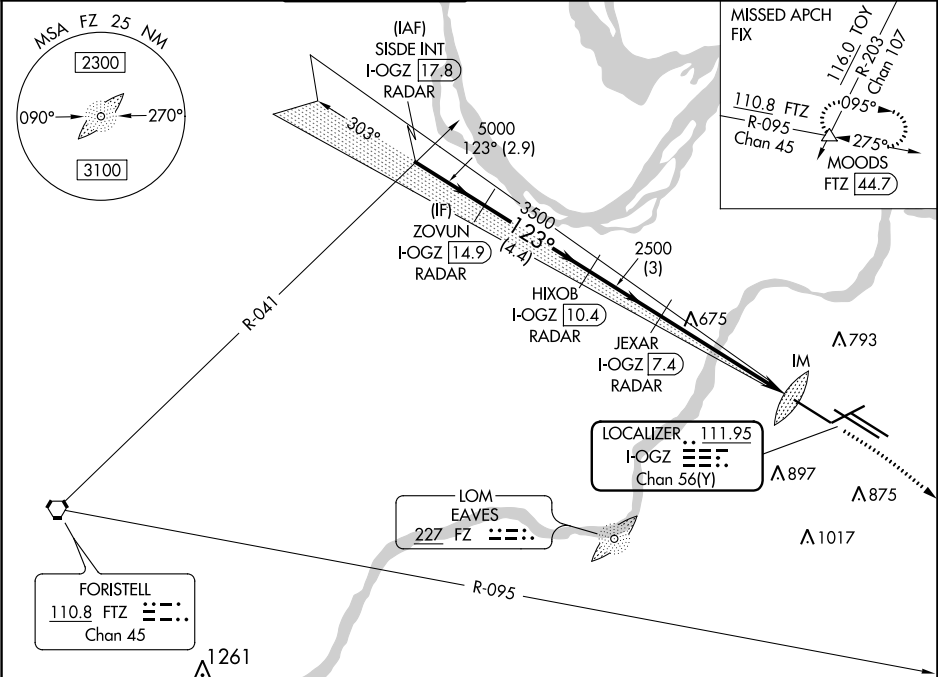
**RADAR required for procedure entry. DME or RADAR required.**

Simultaneous approach authorized with Rwy 12R/L.  
Disregard OM signal associated with ILS to Rwy 12R.

ALSIF-2

MISSED APPROACH: Climb to 1060 then climbing right turn to 3000 on heading 130° and FTZ R-095 to MOODS INT/FTZ 44.7 DME and hold.

D-ATIS <b>125.025</b> <b>379.925</b>	ST. LOUIS APP CON <b>132.125 360.6</b>	ST. LOUIS TOWER <b>132.475 239.275</b>	GND CON <b>121.9 348.6</b> (Inbound) <b>121.65 377.175</b> (Outbound) <b>118.925 227.125</b> (Rwy 11/29)	CLNC DEL <b>119.5 363.1</b>	CPDLC
--	---	---	---	--------------------------------	-------



VGSI and ILS glidepath not coincident (VGSI Angle 3.00/TCH 67).

SISDE INT I-OGZ 17.8 RADAR   ZOVUN I-OGZ 14.9 RADAR   HIXOB I-OGZ 10.4 RADAR   JEXAR I-OGZ 7.4 RADAR

5000 — 123° — 5000 — 3500 — 2500 — IM 719

GS 3.00° TCH 55

2.9 NM   4.4 NM   3 NM   5.6 NM   1209'

CATEGORY	A	B	C	D
S-ILS 11	CAT II RA 187/12 100 DA 718			
S-ILS 11	CAT III RVR 06			

**CATEGORY II & III ILS - SPECIAL AIRCREW & AIRCRAFT CERTIFICATION REQUIRED**

ELEV 618   TDZE 618

Rwy 6-24 7607 X 150  
Rwy 11-29 9001 X 150  
Rwy 12L-30R 9003 X 150  
Rwy 12R-30L 11019 X 200