

WAAS CH <b>77819</b> <b>W35A</b>	APP CRS <b>356°</b>	Rwy Idg TDZE Apt Elev	<b>8061</b> <b>815</b> <b>827</b>
--	------------------------	-----------------------------	---

RNAV (GPS) RWY 35

ROSECRANS MEMORIAL (STJ)

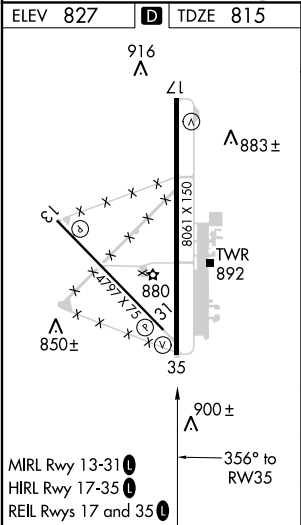
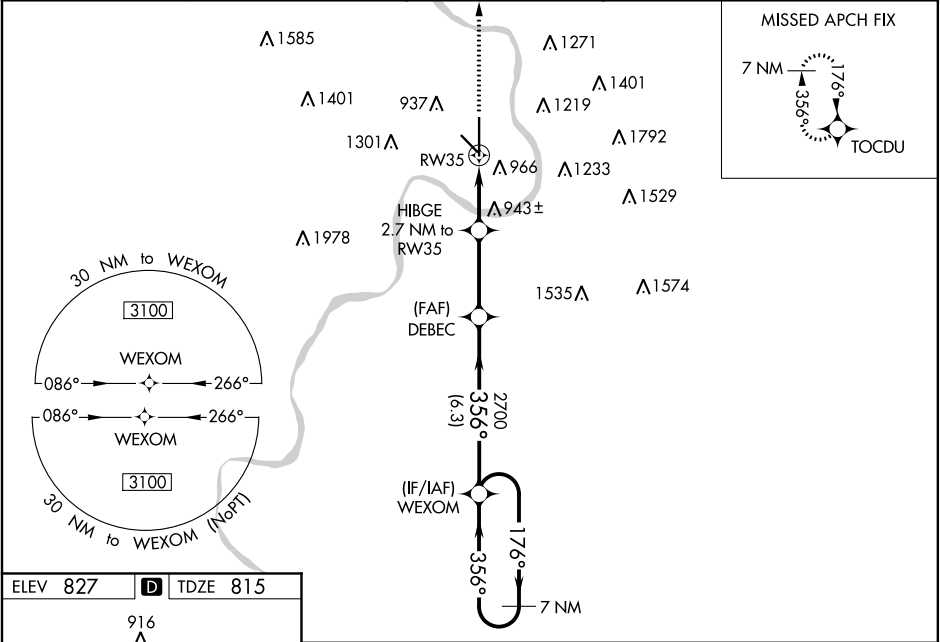
⚠

ASR/PAR

For uncompensated Baro-VNAV systems, LNAV/VNAV NA below -20°C (-4°F) or above 54°C (130°F). DME/DME RNP-0.3 NA. VDP and Baro-VNAV NA when using Kansas City Intl altimeter setting. When local altimeter setting not received, use Kansas City Intl altimeter setting and increase all DA 97 feet and increase LPV all Cats visibility to RVR 5000, and LNAV/VNAV all Cats visibility to 1 ¼ mile; increase all MDA 100 feet, and increase LNAV Cat C/D/E visibility ¼ mile, and Circling Cat C ½ mile, Cat D ½ mile.

MISSED APPROACH:  
Climb to 3000 direct  
TOCDU and hold.

ATIS <b>125.05</b>	ST. JOSEPH APP CON ★ <b>120.35 360.8</b>	ST. JOSEPH TOWER ★ <b>126.9(CTAF) 0 239.0</b>	GND CON <b>121.9</b>	UNICOM <b>122.95</b>
-----------------------	---	--	-------------------------	-------------------------



ELEV 827	D	TDZE 815
916 Λ	Λ1	Λ883±
051 X 1908	TWR 892	35
880	850±	900±
356° to RW35		
MIRL Rwy 13-31	HIRL Rwy 17-35	REIL Rwy 17 and 35

3000	TOCDU	VGSI and RNAV glidepath not coincident (VGSI Angle 2.80/TCH 64).	WEXOM	7 NM Holding Pattern
*LNAV only.	HIBGE 2.7 NM to RW35	DEBEC	2700	176°→ ←356° 3100
*1.1 NM to RW35	1720*	2700	356°	GP 3.00° TCH 50
1.1 NM	1.6 NM	3.1 NM	6.3 NM	

CATEGORY	A	B	C	D	E
LPV DA	1015/40 200 (200-¾)				
LNAV/VNAV DA	1096/45 281 (300-¾)				
LNAV MDA	1200/55	385 (400-1)	1200/60	385 (400-1¼)	
CIRCLING	1400-1 573 (600-1)	1420-1 593 (600-1)	1620-2¼ 793 (800-2¼)	1640-2¾ 813 (900-2¾)	1760-3 933 (1000-3)