

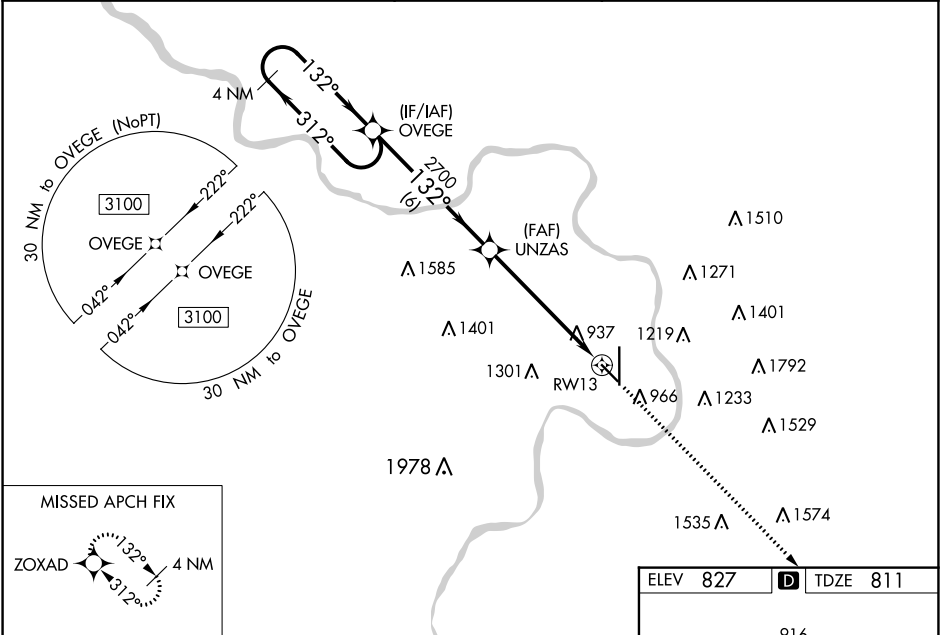
|  |                        |                             |   |
|--|------------------------|-----------------------------|---|
| WAAS<br>CH <b>57935</b><br><b>W13A</b> | APP CRS<br><b>132°</b> | Rwy Idg<br>TDZE<br>Apt Elev | <b>4797</b><br><b>811</b><br><b>827</b> |
|--|------------------------|-----------------------------|---|

RNAV (GPS) RWY 13  
ROSECRANS MEMORIAL (STJ)

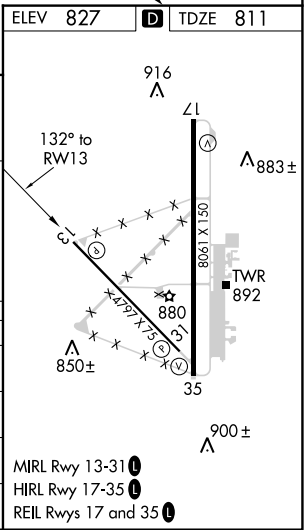
**⚠** For uncompensated Baro-VNAV systems, LNAV/VNAV NA below -20°C (-4°F) or above 54°C (130°F). DME/DME RNP-0.3 NA. Straight-In minimums NA at night. Baro-VNAV and VDP NA when using Kansas City Intl altimeter setting. Helicopter visibility reduction below ¼ SM NA. When local altimeter setting not received, use Kansas City Intl altimeter setting and increase all DA 97 feet, and LPV visibility ⅓ mile all Cats, LNAV/VNAV visibility ¼ mile all Cats; increase all MDA 100 feet and Circling Cat C ½ mile, Cat D ¼ mile.

**MISSED APPROACH:**  
Climb to 3100 direct ZOXAD and hold.

|                       |   |   |                         |                         |
|-----------------------|---|---|-------------------------|-------------------------|
| ATIS<br><b>125.05</b> | ST. JOSEPH APP CON ★<br><b>120.35 360.8</b> | ST. JOSEPH TOWER ★<br><b>126.9 (CTAF) 239.0</b> | GND CON<br><b>121.9</b> | UNICOM<br><b>122.95</b> |
|-----------------------|---|---|-------------------------|-------------------------|



|                             |                       |                         |                         |                         |
|-----------------------------|-----------------------|-------------------------|-------------------------|-------------------------|
| <b>4 NM Holding Pattern</b> |                       |                         |                         |                         |
| 3100 ← 312° / 132° →        |                       |                         |                         |                         |
| GP 3.00° TCH 50             |                       |                         |                         |                         |
| 6 NM   3.5 NM   2.3 NM      |                       |                         |                         |                         |
| CATEGORY                    | A                     | B                       | C                       | D                       |
| LPV DA                      | 1377-1⅞ 566 (600-1⅞)  |                         |                         |                         |
| LNAV/VNAV DA                | 1416-2¼ 605 (600-2¼)  |                         |                         |                         |
| LNAV MDA                    | 1580-1<br>769 (800-1) | 1580-1¼<br>769 (800-1¼) | 1580-2½<br>769 (800-2½) |                         |
| CIRCLING                    | 1580-1<br>753 (800-1) | 1580-1¼<br>753 (800-1¼) | 1620-2½<br>793 (800-2½) | 1640-2¾<br>813 (900-2¾) |



NC-3, 03 DEC 2020 to 31 DEC 2020

NC-3, 03 DEC 2020 to 31 DEC 2020