

LOC/DME I-RRU 111.3 Chan 50	APP CRS 269°	Rwy Idg 8175 TDZE 862 Apt Elev 869
---	------------------------	---


ILS or LOC RWY 27
THE EASTERN IOWA (CID)

⚠ VDP NA with Iowa City altimeter setting. Autopilot coupled approach NA below 1910.

⚠ When local altimeter setting not received, use Iowa City altimeter setting increase DA 64 feet and all MDA 80 feet, increase S-LOC Cat C and D visibility to RVR 5000.

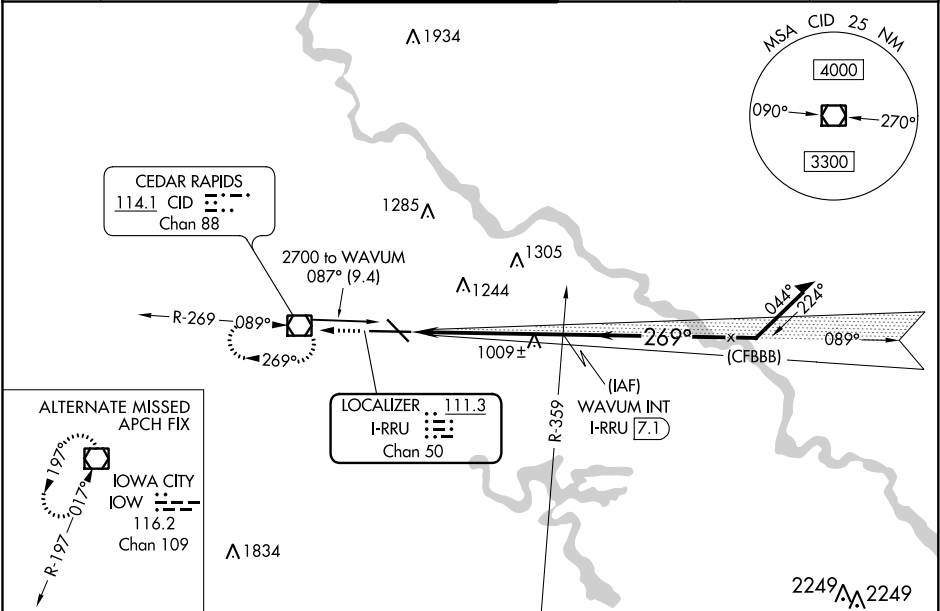
RVR 1800 authorized with use of FD or HUD to DA (NA when using Iowa City altimeter setting).

MALSR

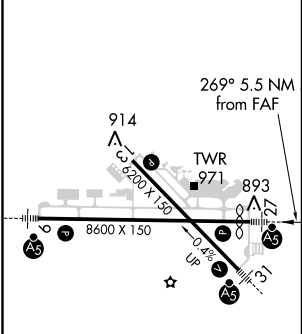


MISSED APPROACH: Climb to 2900 direct CID VOR/DME and hold, continue climb-in-hold to 2900.


ATIS 124.15	CEDAR RAPIDS APP CON ★ 119.7 266.8	CEDAR RAPIDS TOWER ★ 118.7 (CTAF) 266.8	GND CON 121.6	CLNC DEL 125.45	UNICOM 122.95
-----------------------	--	---	-------------------------	---------------------------	-------------------------



ELEV 869	D	TDZE 862
-----------------	----------	-----------------



FAF to MAP 5.5 NM					
Knots	60	90	120	150	180
Min:Sec	5:30	3:40	2:45	2:12	1:50

2900 ↑ CID 		WAVUM INT I-RRU 7.1		Remain within 10 NM	
*LOC only		*I-RRU 2.7		2700	
I-RRU 1.6		2700		2700	
1.1 NM		4.4 NM		GS 3.00° TCH 49	
CATEGORY	A	B	C	D	
S-ILS 27#	1062/24 200 (200-½)				
S-LOC 27	1260/24 398 (400-½)		1260/35 398 (400-⅝)		
CIRCLING	1280-1 411 (500-1)	1320-1 451 (500-1)	1320-1½ 451 (500-1½)	1420-2 551 (600-2)	