

WAAS CH 69202 W05A	APP CRS 053°	Rwy Idg 9004 TDZE 931 Apt Elev 958
--	------------------------	---


RNAV (GPS) RWY 5
DES MOINES INTL (DSM)

⚠ For uncompensated Baro-VNAV systems, LNAV/VNAV NA below -19°C (-2°F) or above 54°C (130°F). DME/DME RNP-0.3 NA.

For inop MALSR, increase LPV all Cnts visibility to RVR 4000 feet, LNAV/VNAV all Cnts visibility to 1½ mile, LNAV Cnts A and B visibilities to RVR 5500 feet, and LNAV Cnts C and D visibilities to RVR 6000 feet.

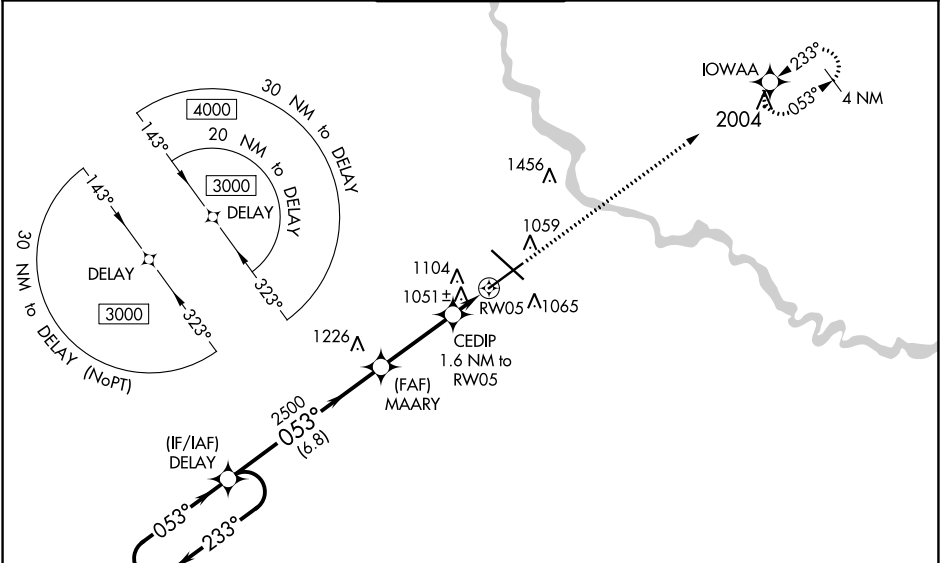
RVR 1800 authorized with use of FD or AP or HUD to DA.

MALSR



MISSED APPROACH: Climb to 3100 direct IOWAA and hold.

ATIS 119.55	DES MOINES APP CON 123.9 307.15	DES MOINES TOWER 118.3 257.8	GND CON 121.9 348.6	CLNC DEL 134.15 317.55
-----------------------	---	--	-------------------------------	----------------------------------



ELEV 958		D TDZE 931	
4 NM Holding Pattern		MAARY	
3000		CEDIP 1.6 NM to RW05	
GP 3.00° TCH 55		*1480	
2500		*1.1 NM to RW05	
6.8 NM		0.5 NM	
3.2 NM		1.1 NM	
CATEGORY	A	B	C
LPV DA #	1131/24	200 (200-½)	
LNAV/VNAV DA	1352/40	421 (400-¾)	
LNAV MDA	1320/24	389 (400-½)	1320/35 389 (400-⅝)
CIRCLING	1420-1	462 (500-1)	1600-1¾ 642 (700-1¾) 1760-2½ 802 (900-2½)

NC-3, 03 DEC 2020 to 31 DEC 2020

NC-3, 03 DEC 2020 to 31 DEC 2020