

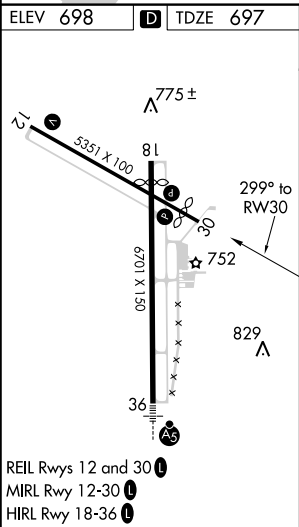
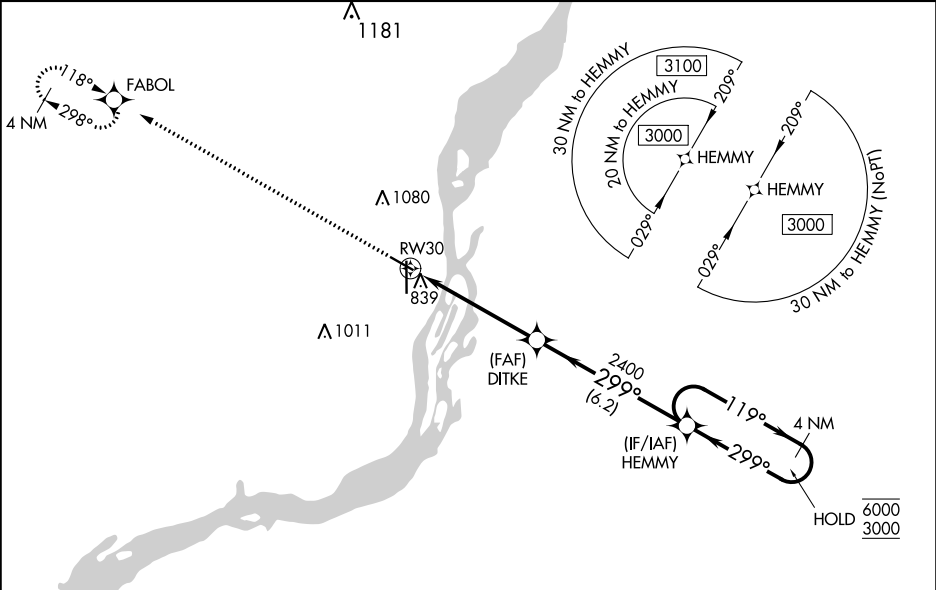
WAAS CH 45535 W30A	APP CRS 299°	Rwy Idg TDZE 697 Apt Elev 698
--	------------------------	---

RNAV (GPS) RWY 30

SOUTHEAST IOWA RGNL (BRL)

RNP APCH.		MISSED APPROACH: Climb to 3000 direct FABOL and hold.
<div><div>⚠</div><div>Rwy 30 helicopter visibility reduction below ¾ SM NA. For uncompensated Baro-VNAV systems, procedure NA below -21°C or above 54°C.</div></div> <div><div>❄</div><div>-28°C/-18°F</div></div>		

ASOS 118.025	CHICAGO CENTER 135.6 370.95	UNICOM 123.0 (CTAF)
------------------------	---------------------------------------	-------------------------------



3000	FABOL	VGSI and descent angles not coincident (VGSI Angle 3.00/TCH 30).	HEMMY	4 NM Holding Pattern
*LNAV only		DITKE	2400	119° → 6000 ← 299° 3000
*1.2 NM to RW30			2400	GP 3.00° TCH 40
RW30				
1.2	4 NM	6.2 NM		
CATEGORY	A	B	C	D
LPV DA	995-1 298 (300-1)			NA
LNAV/VNAV DA	989-1 292 (300-1)			NA
LNAV MDA	1100-1 403 (500-1)	1100-1 ¼ 403 (500-1 ¼)		NA
CIRCLING	1180-1 482 (500-1)	1380-2 682 (800-2)		NA

NC-3, 03 DEC 2020 to 31 DEC 2020

NC-3, 03 DEC 2020 to 31 DEC 2020