

WAAS CH <b>40222</b> <b>W36A</b>	APP CRS <b>355°</b>	Rwy Idg <b>5500</b> TDZE <b>1173</b> Apt Elev <b>1174</b>
--	------------------------	---

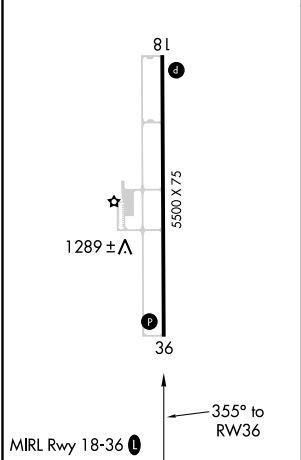
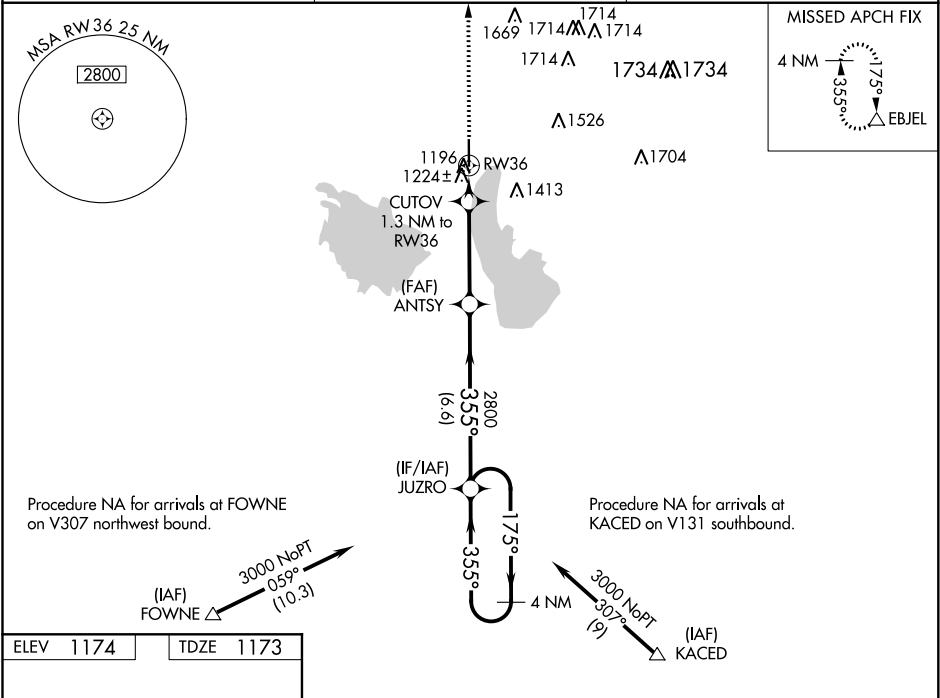
RNAV (GPS) RWY 36  
COFFEY COUNTY (UKL)

**NA**

Baro-VNAV NA when using Emporia altimeter setting. For uncompensated Baro-VNAV systems, LNAV/VNAV NA below -17°C (2°F) or above 54°C (130°F). Procedure NA at night. DME/DME RNP-0.3 NA. Visibility reduction by helicopters NA. When local altimeter setting not received, use Emporia altimeter setting and increase all DA to 1476 feet and all MDA 60 feet.

**MISSED APPROACH:**  
Climb to 3000 direct  
EBJEL and hold.

AWOS-3 <b>121.125</b>	KANSAS CITY CENTER <b>127.725 270.25</b>	UNICOM <b>123.0 (CTAF) 0</b>
--------------------------	---	---------------------------------



3000	EBJEL	VGSIs and RNAV glidepath not coincident (VGSIs Angle 3.00/TCH 43).			
*LNAV only.		CUTOV 1.3 NM to RW36	ANTSY 2800	JUZRO	4 NM Holding Pattern
		1620*	2800	3000	GP 3.00° TCH 40
		1.3	3.7 NM	6.6 NM	
CATEGORY	A	B	C	D	
LPV DA	1423-1	250 (300-1)		NA	
LNAV/VNAV DA	1423-1	250 (300-1)		NA	
LNAV MDA	1480-1	307 (400-1)		NA	
CIRCLING	1560-1 386 (400-1)	1640-1 466 (500-1)	1640-1½ 466 (500-1½)	NA	

NC-2, 03 DEC 2020 to 31 DEC 2020

NC-2, 03 DEC 2020 to 31 DEC 2020