

WAAS CH 86733 W18A	APP CRS 176°	Rwy Idg 5000 TDZE 2238 Apt Elev 2238
--	------------------------	---

RNAV (GPS) RWY 18

▼ For uncompensated Baro-VNAV systems, LNAV/VNAV NA below -24°C (-11°F) or above 54°C (130°F). Circling NA west of Rwy 18-36. DME/DME RNP-0.3 NA. When local altimeter setting not received, use Hways altimeter setting: Increase LPV DA to 2617 feet, LNAV/VNAV DA to 2630 feet, and visibility LPV all Cats ¼ mile, LNAV/VNAV all Cats ⅓ mile; Increase all MDA 140 feet and visibility LNAV Cat C ⅓ mile and Circling Cat C ¼ mile. Night landing: Rwy 18 NA. Helicopter visibility reduction below 1 SM NA. Baro-VNAV NA when using Hways altimeter setting.

MISSED APPROACH:
Climb to 4200 direct
FIMEV and hold.

ASOS 118.425	DENVER CENTER 132.7 226.675	CTAF 122.9 0
------------------------	---------------------------------------	------------------------

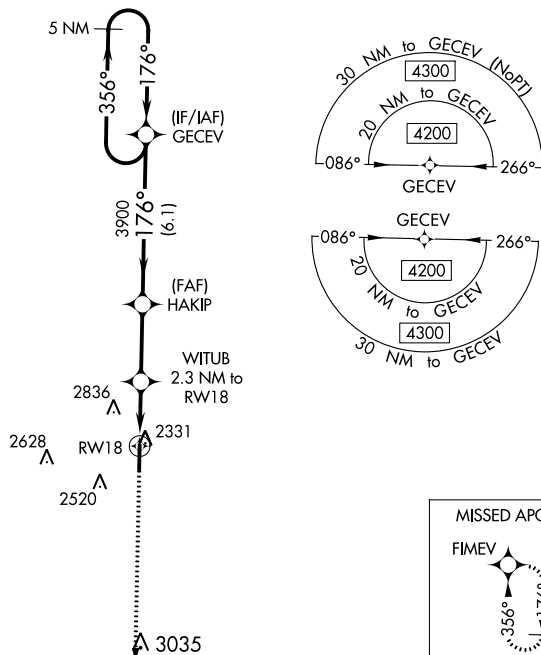


Diagram illustrating the HIRL Rwy 18-36 and REIL Rwy 18 and 36. The diagram shows a vertical runway with a height of 81 feet at the top and 36 feet at the bottom. A 176-degree angle is indicated from the top of the runway to the REIL Rwy 18. The runway is labeled "5000 X 75" and "1.0% UP". A star symbol is located near the bottom of the runway.

<div style="display: flex; justify-content: space-around;"> <div style="text-align: center;"> 4200 * RNAV only </div> <div style="text-align: center;"> FMEV </div> </div>				
CATEGORY	A	B	C	D
LPV DA	2488-1	250 (300-1)		NA
RNAV/ VNAV	2501-1	263 (300-1)		NA
RNAV MDA	2600-1	362 (400-1)		NA
C CIRCLING	2640-1 402 (500-1)	2700-1 462 (500-1)	2700-1½ 462 (500-1½)	NA