

VORTAC ICT 113.8 Chan 85	APP CRS 152°	Rwy Idg 5201 TDZE 1277 Apt Elev 1277
---------------------------------------	------------------------	---

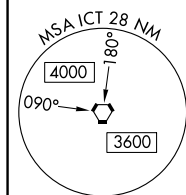
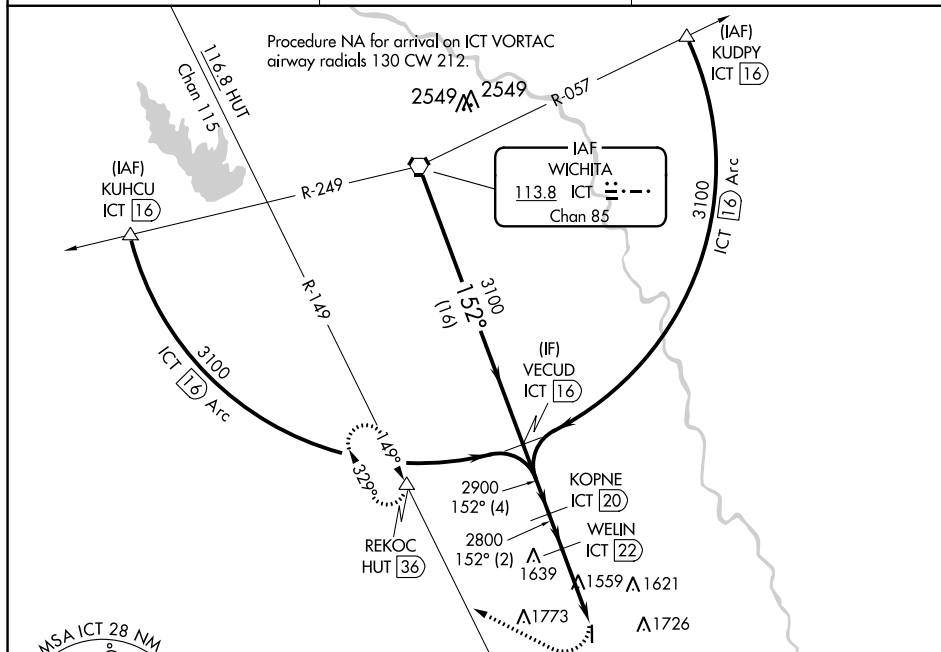
VOR RWY 18
WELLINGTON MUNI (EGT)

DME required.

T When local altimeter setting not received, use Wichita
A NA Dwight D Eisenhower National altimeter setting.

MISSED APPROACH: Climbing right turn to 3300 on heading 290° and HUT VOR/DME R-149 to REKOC/HUT 36 DME and hold.

AWOS-3 118.875	WICHITA APP CON 134.85	UNICOM 122.8 (CTAF) 0
--------------------------	----------------------------------	---------------------------------



CATEGORY	A	B	C	D
S-18	2100-1 823 (900-1)	2100-1¼ 823 (900-1¼)	2100-2½ 823 (900-2½)	2180-3 903 (1000-3)
C CIRCLING	2100-1¼ 823 (900-1¼)	2100-2½ 823 (900-2½)	2180-3 903 (1000-3)	

Diagram details: The diagram shows a runway layout with a 5201 x 100 ft runway. The runway is divided into four segments: A (16 NM), B (4 NM), C (2 NM), and D (4.5 NM). The total length is 30 NM. The diagram also shows the HIRL Rwy 18-36 layout with a 36 ft wide taxiway and a 36 ft wide runway. The diagram includes a table of categories and distances, and a diagram of the runway layout.

WELLINGTON, KANSAS
Amdt 3 13SEP18

37°19'N-97°23'W

WELLINGTON MUNI (EGT)
VOR RWY 18