

WAAS  
CH **70434**  
**W33A**

APP CRS  
**334°**

Rwy Idg  
TDZE  
Apt Elev

**4200**  
**1379**  
**1379**

**RNAV (GPS) RWY 33**

EL DORADO/CAPTAIN JACK THOMAS MEMORIAL (EQA)

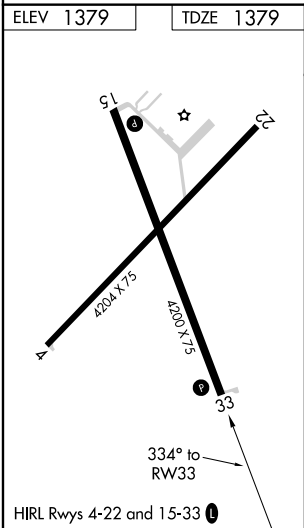
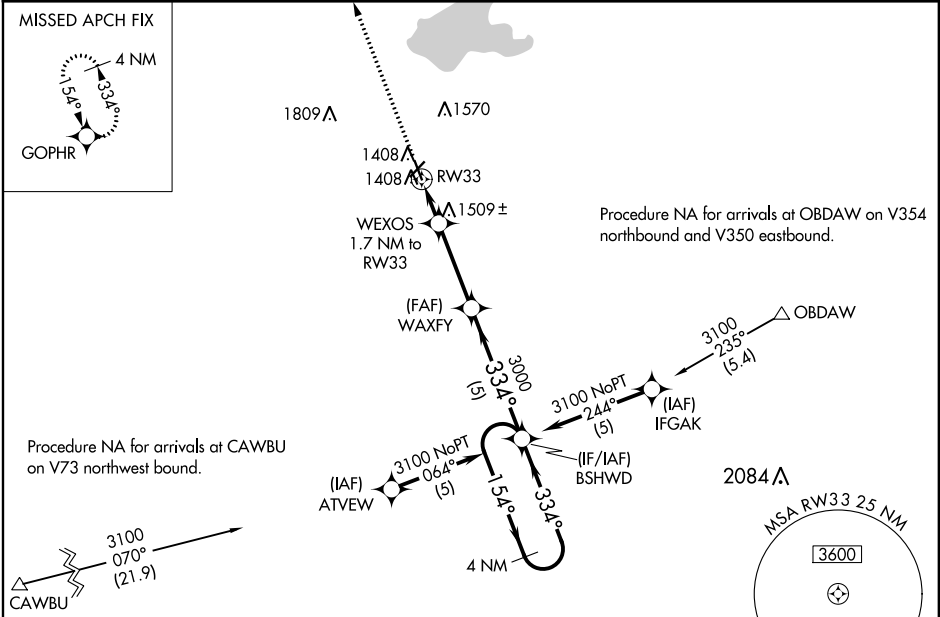
**V**

**NA**

For uncompensated Baro-VNAV systems, LNAV/VNAV NA below -17°C (2°F) or above 54°C (130°F). DME/DME RNP-0.3 NA. When local altimeter setting not received, use Colonel James Jabara altimeter setting and increase all DA 51 feet and all MDA 60 feet. Baro-VNAV and VDP NA when using Colonel James Jabara altimeter setting.

MISSED APPROACH: Climb to 3100 direct GOPHR and hold.

AWOS-3P <b>120.875</b>	WICHITA APP CON <b>134.8 269.1</b>	UNICOM <b>122.8 (CTAF) 0</b>
---------------------------	---------------------------------------	---------------------------------



3100	GOPHR	VGSI and RNAV glidepath not coincident. (VGSI Angle 3.00/TCH 25)	BSHWD	4 NM Holding Pattern
* LNAV only.	WEXOS 1.7 NM to RW33	WAXFY 3000	3100	GP 3.00° TCH 40
	* 1.1 NM to RW33	1960*	3000	
	1.1	0.6	3.3 NM	5 NM
CATEGORY	A	B	C	D
LPV DA	1579-1	200 (200-1)	NA	
LNAV/VNAV DA	1629-1	250 (300-1)	NA	
LNAV MDA	1760-1	381 (400-1)	NA	
CIRCLING	1820-1 441 (500-1)	1960-1 581 (600-1)	NA	