

WAAS CH <b>82420</b> <b>W34A</b>	APP CRS <b>337°</b>	Rwy Idg <b>4200</b> TDZE <b>1283</b> Apt Elev <b>1283</b>
--	------------------------	---

RNAV (GPS) RWY 34  
MARYSVILLE MUNI (MYZ)

RNP APCH.

**T**  
**A** NA When local altimeter setting not received, use Beatrice altimeter setting.  
Baro-VNAV NA when using Beatrice altimeter setting.

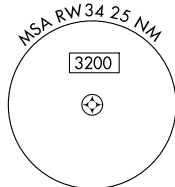
**MISSED APPROACH:** Climb to 3200 direct JUSM and hold.

AWOS-3PT  
**118.675**

KANSAS CITY CENTER  
123.8 343.7

UNICOM  
122.8 (CTAF) **L**

MISSED APCH FIX



1958 A

(FAF) CAWXY

3200  
337  
17

(IF/IAF)  
JELOK -

(IAF) ZILGU

(IAF)   
ZILGU

3200 NoPT  
247°  
(8.1)

0 NoPT  $\triangle$  ZINUR  
247°  
(8.1)

4 NM  
3200 A

2004

ENUBE 3200  
070°  
(14)

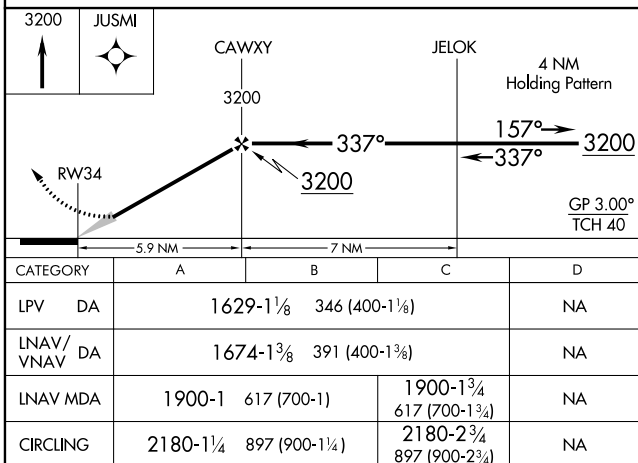
2012 A

ELEV 1283

TDZE 1283



337°  
RW3  
MIRL Rwy 16-34 **L**  
REIL Rwy 16 and 34 **L**



MARYSVILLE, KANSAS

Orig-C 25APR19

39°51'N-96°38'W

MARYSVILLE MUNI (MYZ)

RNAV (GPS) RWY 34