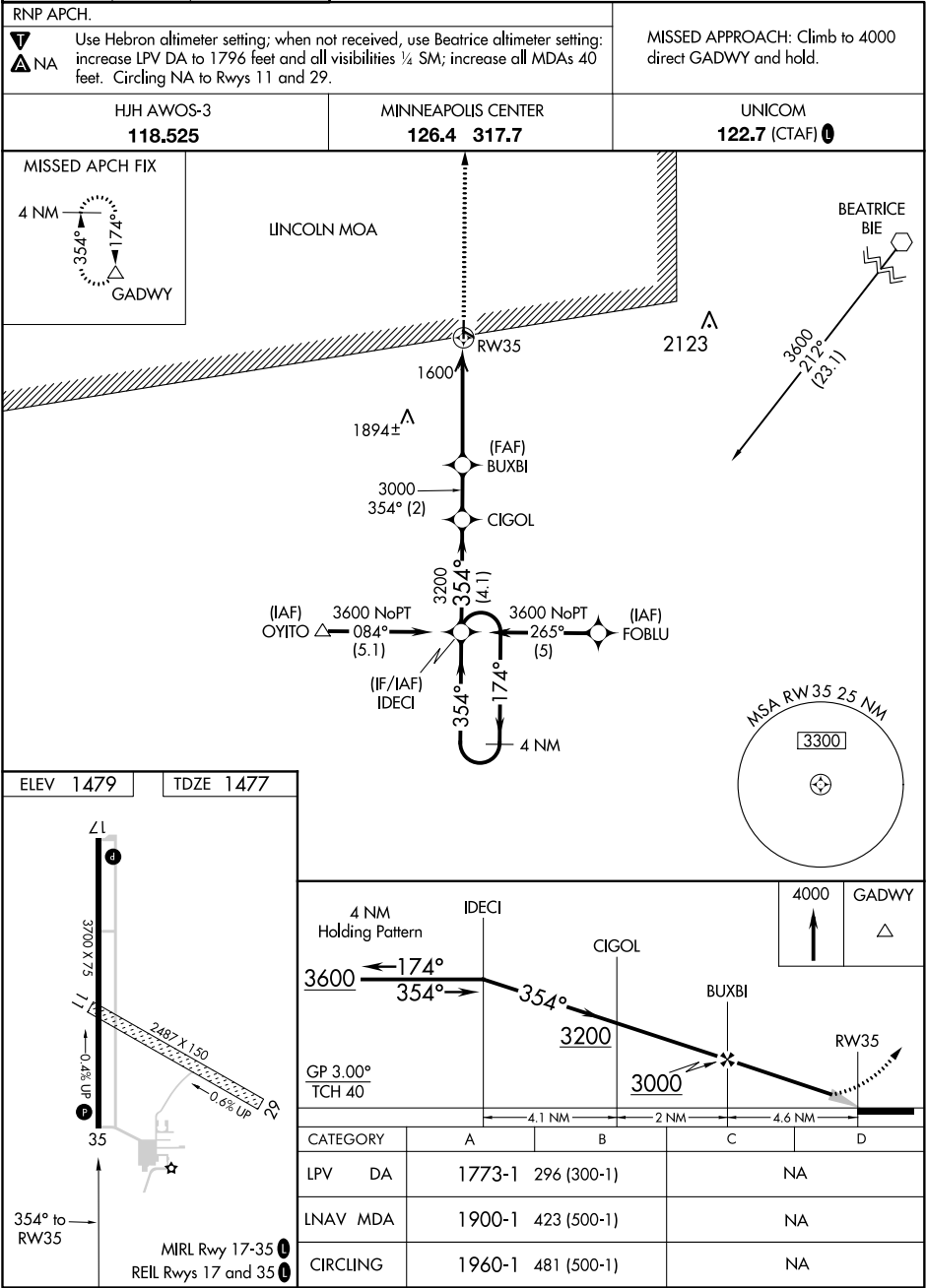


WAAS CH 65808 W35A	APP CRS 354°	Rwy Idg TDZE 1477 Apt Elev 1479
--	------------------------	---

RNAV (GPS) RWY 35

FAIRBURY MUNI (F'BY)



HJH AWOS-3
118.525

MINNEAPOLIS CENTER
126.4 317.7

UNICOM
122.7 (CTAF) 0

MISSED APCH FIX

4 NM

354°

174°

GADWY

LINCOLN MOA

1600

1894±

3000

354° (2)

CIGOL

3200

354° (4.1)

(IAF) OYITO

3600 NoPT

084° (5.1)

(IF/IAF) IDECI

3600 NoPT

265° (5)

(IAF) FOBLU

354°

174°

4 NM

2123

3600

212° (23.1)

BEATRICE BIE

MSA RW35 25 NM

3300

ELEV 1479

TDZE 1477

3700 X 75

71

0.4% UP

35

2487 X 150

0.6% UP

MIRL Rwy 17-35

REIL Rwys 17 and 35

4 NM Holding Pattern

IDECI

3600

174°

354°

GP 3.00°

TCH 40

CIGOL

3200

354°

BUXBI

3000

RW35

4.1 NM

2 NM

4.6 NM

4000

GADWY

CATEGORY	A	B	C	D
LPV DA	1773-1	296 (300-1)	NA	
LNAV MDA	1900-1	423 (500-1)	NA	
CIRCLING	1960-1	481 (500-1)	NA	

NC-2, 03 DEC 2020 to 31 DEC 2020

NC-2, 03 DEC 2020 to 31 DEC 2020