

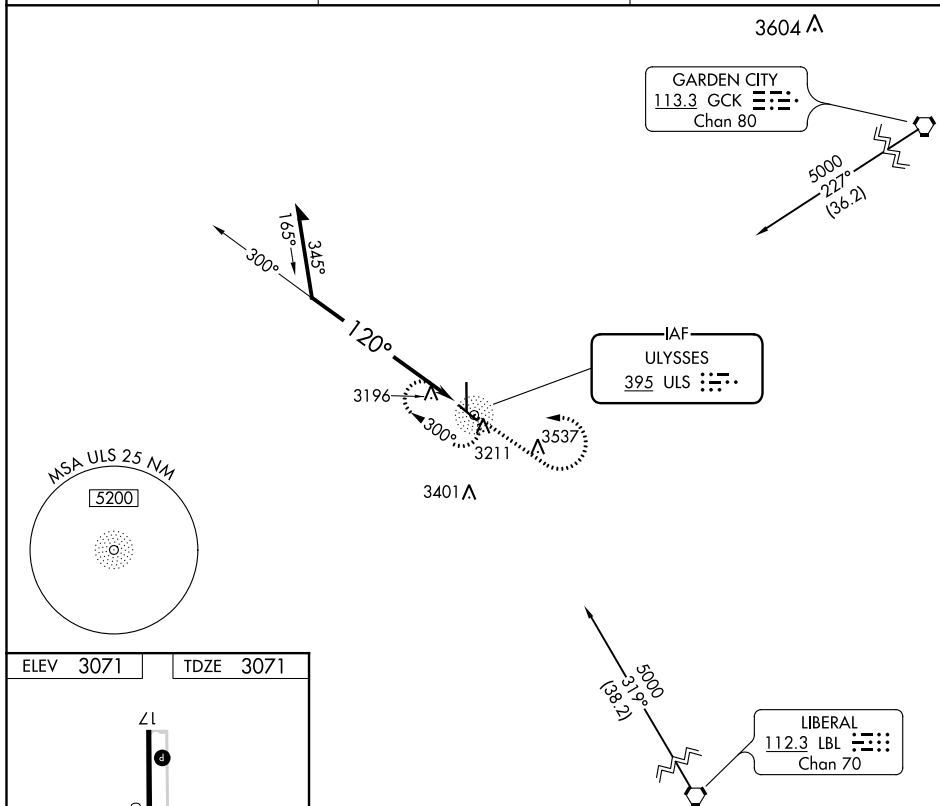
NDB ULS <u>395</u>	APP CRS 120°	Rwy Idg TDZE Apt Elev	4600 3071 3071
------------------------------	------------------------	-----------------------------	---

NDB RWY 12
ULYSSES (ULS)

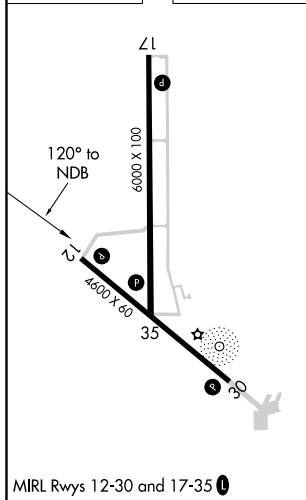
T When local altimeter setting not received, use Garden City
NA altimeter setting: increase all MDA 120 feet and S-12 visibility
 Cat B $\frac{1}{4}$ mile, Cat C $\frac{1}{2}$ mile and Circling Cat B/C $\frac{1}{4}$ mile.

MISSED APPROACH: Climb to 4100 then climbing left turn to 5000 direct ULS NDB and hold.

AWOS-3 118.95	KANSAS CITY CENTER 125.2 269.4	UNICOM 122.8 (CTAF) 0
-------------------------	--	---------------------------------



ELEV 3071		TDZE 3071
-----------	--	-----------



4100	5000	ULS
↑	↘	○