

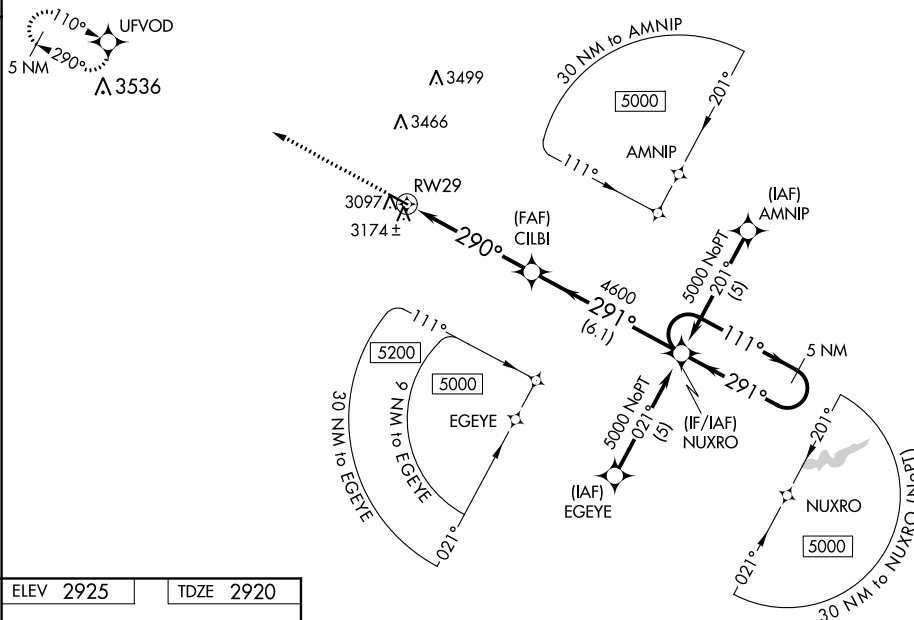
WAAS CH 65718 W29A	APP CRS 290°	Rwy Idg 4400 TDZE 2920 Apt Elev 2925
--	------------------------	---

RNAV (GPS) RWY 29
THOMAS COUNTY (TIF)

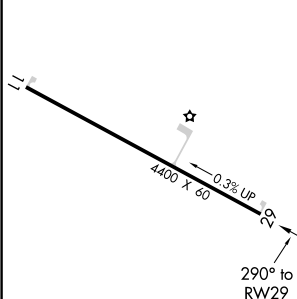
T Baro-VNAV NA when using North Platte altimeter setting. For uncompensated Baro-VNAV systems, LNAV/VNAV NA below -20°C (-4°F) or above 54°C (130°F).
A DME/DME RNP-0.3 NA. When local altimeter setting not received use North Platte altimeter setting and increase all DA 137 feet and all MDA 140 feet; increase LPV and LNAV/VNAV Cats A and B visibility ½ mile. VDP NA with North Platte altimeter setting.

MISSED APPROACH: Climb to 5000 direct UFVOD and hold.

AWOS-3 120.825	DENVER CENTER 127.95 338.2	CTAF 122.9
--------------------------	--------------------------------------	----------------------



ELEV 2925		TDZE 2920
-----------	--	-----------

[illegible]