

OGALLALA, NEBRASKA

AL-6070 (FAA)

19339

WAAS
CH 93531
W13A

APP CRS
137°

Rwy Idg	3700
TDZE	3279
Apt Elev	3279

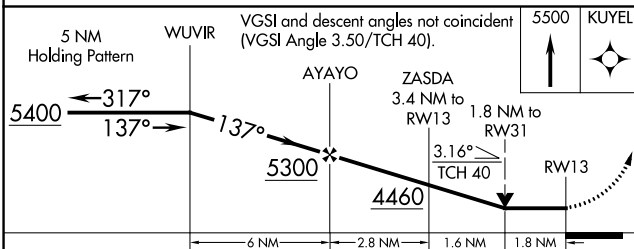
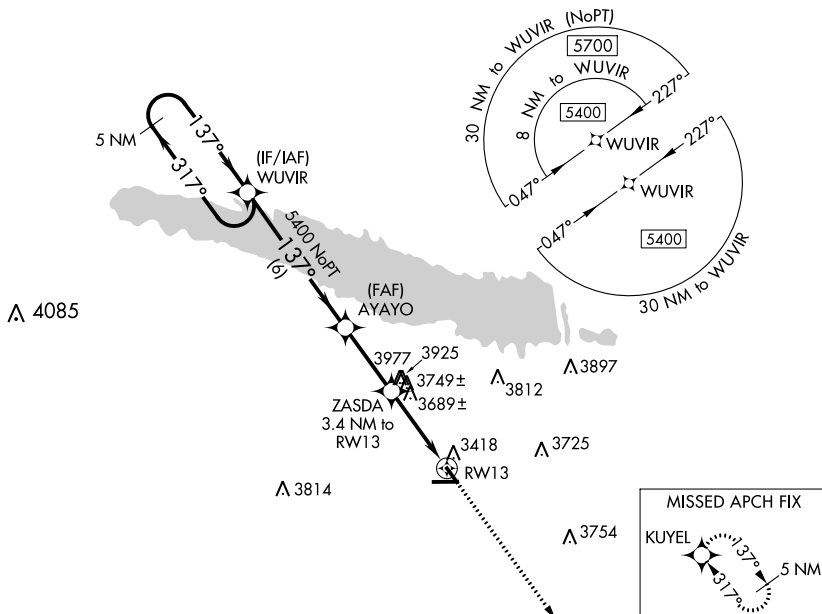
RNAV (GPS) RWY 13
SEARLE FIELD (OGA)

RNP APCH.

T When local altimeter setting not received, use Imperial altimeter setting and increase all MDA 100 feet, increase LP, LNAV and Circling Cat B visibility to 1¼.
A VDP NA with Imperial altimeter setting.

MISSED APPROACH: Climb to 5500 direct KUYEL and hold.

AWOS-3
121.275

DENVER CENTER
132.7 397.85UN|COM
122.8 (CTAF) **L**

CATEGORY	A	B	C	D
LP MDA	3940-1	661 (700-1)	NA	
LNAV MDA	4000-1	721 (800-1)	NA	
CIRCLING	4000-1	721 (800-1)	NA	

ELEV 3279

TDZE 3279

137° to RW13

5102 X 75

3700 X 60

0.3% UP

0.9% UP

8 26

13 31

MIRL Rwy 8-26 and 13-31

OGALLALA, NEBRASKA
Orig-D 05DEC19

41°07'N-101°46'W

SEARLE FIELD (OGA)
RNAV (GPS) RWY 13

NC-2, 03 DEC 2020 to 31 DEC 2020