

WAAS CH 82020 W35A	APP CRS 352°	Rwy Idg TDZE Apt Elev	4201 2012 2011
--	------------------------	-----------------------------	---

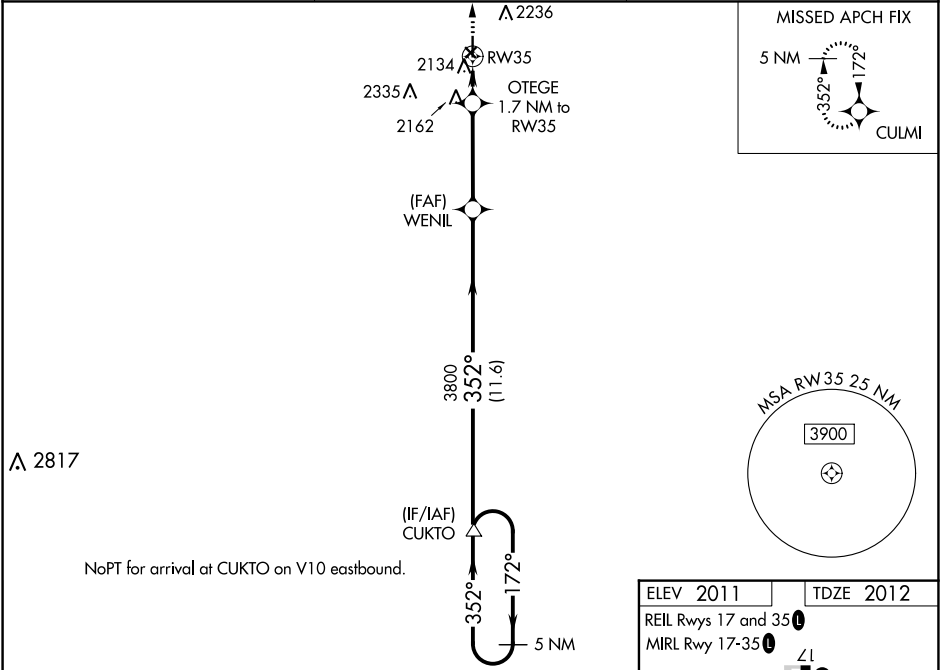
RNAV (GPS) RWY 35
LARNED-PAWNEE COUNTY (LQR)

RNP APCH.

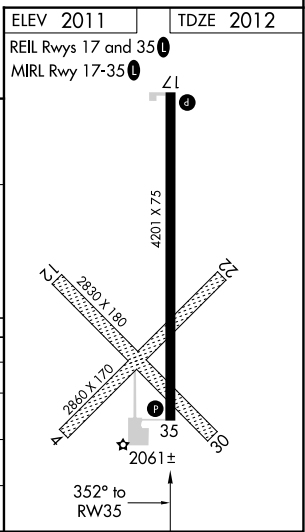
Baro-VNAV NA when using Great Bend altimeter setting. For uncompensated Baro-VNAV systems, LNAV/VNAV NA below -18°C or above 54°C. Rwy 35 helicopter visibility reduction below 1 SM NA. When local altimeter setting not received, use Great Bend altimeter setting and increase all DA 49 feet and LNAV/VNAV all Cts visibility 1/8 SM; increase all MDA 60 feet and increase LNAV Cat C and Circling Cat C visibility 1/4 SM. Circling NA to Rwy 4, 12, 22 and 30. Procedure NA at night.

MISSED APPROACH:
Climb to 4500 direct CULMI and hold.

AWOS-3 119.875	KANSAS CITY CENTER 124.4 322.4	UNICOM 122.8 (CTAF) 0
--------------------------	--	---------------------------------



5 NM Holding Pattern				
CULMI				
4300 ← 172° / 352° →				
GP 3.00° TCH 36				
3800				
WENIL				
3800				
OTEGE 1.7 NM to RW35				
*2580				
RW35				
11.6 NM 3.8 NM 1.7 NM				
CATEGORY	A	B	C	D
LPV DA	2262-1 250 (300-1)			NA
LNAV/VNAV DA	2337-1 1/8 325 (400-1 1/8)			NA
LNAV MDA	2420-1 408 (500-1)		2420-1 1/2 408 (500-1 1/2)	NA
CIRCLING	2500-1 489 (500-1)	2600-1 589 (600-1)	2600-1 1/2 589 (600-1 1/2)	NA



NC-2, 03 DEC 2020 to 31 DEC 2020

NC-2, 03 DEC 2020 to 31 DEC 2020