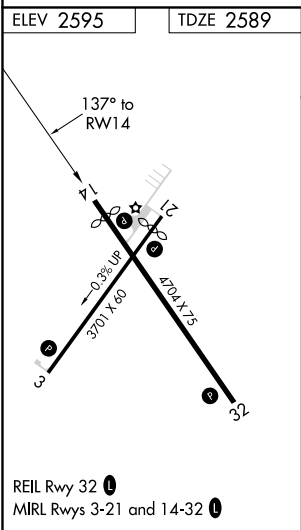
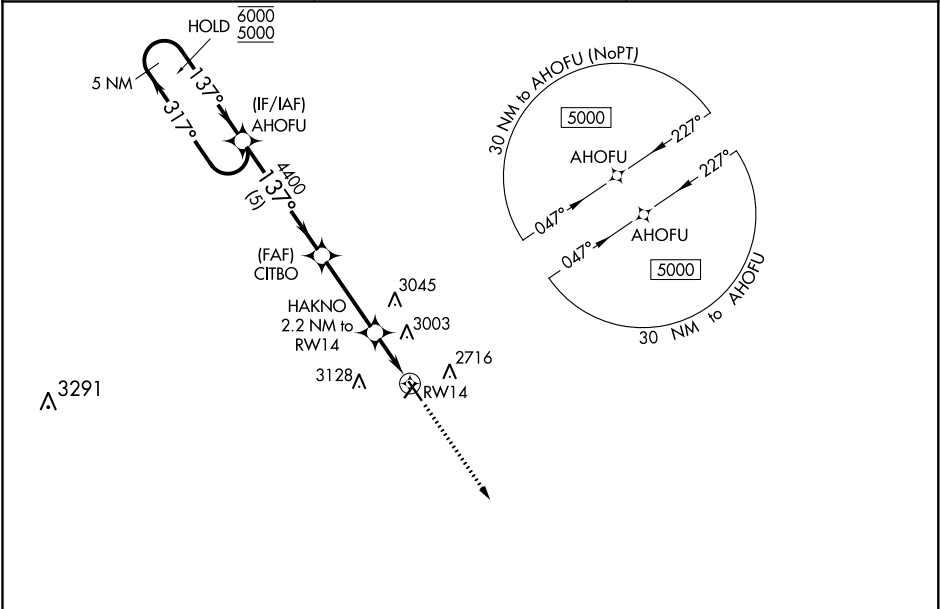


RNP APCH.

For uncompensated Baro-VNAV systems, LNAV/VNAV NA below -25°C or above 54°C .
Rwy 14 helicopter visibility reduction below ¾ SM NA.

MISSED APPROACH:
Climb to 5000 direct
GIYIT and hold.

ASOS 118.075	DENVER CENTER 127.95 338.2	UNICOM 122.8 (CTAF) 0
------------------------	--------------------------------------	---------------------------------



GIYIT

5 NM

138°

318°

5 NM Holding Pattern	AHOFU	CITBO	HAKNO 2.2 NM to RW14	5000	GIYIT
6000	317°	4400	137°	1.7 NM to RW14	*LNAV only
5000	137°	4400	*3320	RW14	
GP 3.00°					
TCH 40					
	5 NM	3.4 NM	0.5	1.7 NM	
CATEGORY	A	B	C	D	
LPV DA	2861-1	272 (300-1)	NA		
LNAV/VNAV DA	3239-2¼	650 (700-2¼)	NA		
LNAV MDA	3160-1	571 (600-1)	NA		
CIRCLING	3160-1 565 (600-1)	3560-1½ 965 (1000-1½)	NA		