

WAAS
CH **72609**
W14A

APP CRS
141°

Rwy Idg
TDZE
Apt Elev

4203
2546
2546

RNAV (GPS) RWY 14

BROKEN BOW MUNI/KEITH GLAZE FLD (BBW)

RNP APCH.

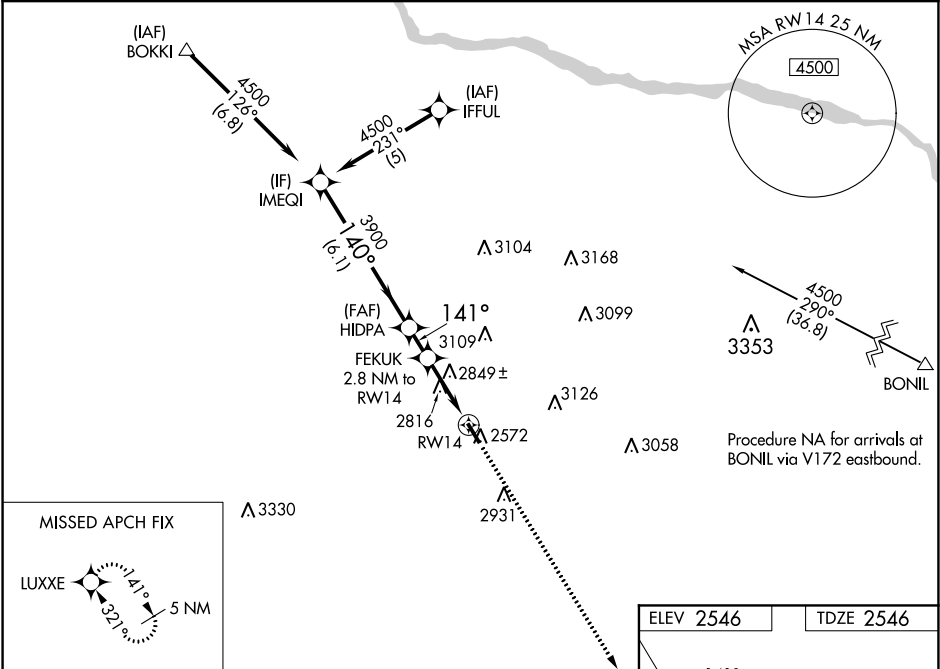
▼

▲

When local altimeter setting not received, use North Platte Rgnl altimeter setting and increase all DA/MDA 160 feet and increase LPV all Cats visibility ½ mile, LNAV/VNAV all Cats visibility ¾ mile, LNAV and Circling Cat B visibility ¼ mile. VDP and Baro/VNAV NA when using North Platte Rgnl altimeter setting. For uncompensated Baro-VNAV systems, LNAV/VNAV NA below -20°C or above 54°C. Rwy 14 helicopter visibility reduction below ¾ SM NA.

MISSED APPROACH:
Climb to 4300 direct LUXXE and hold.

ASOS 120.0	DENVER CENTER 132.7 226.675	UNICOM 122.8 (CTAF) 0
----------------------	---------------------------------------	---------------------------------



MEQI

HIDPA

FEKUK

2.8 NM to RWY14

2816

2572

2931

4300

LUXXE

4500

3900

3900

140°

141°

141° to RWY14

3480

1.9 NM to RWY14

1.9 NM

0.9 NM

1.3 NM

6.1 NM

GP 3.00°

TCH 40

Procedure Turn NA

VGSI and RNAV glidepath not coincident.
(VGSI Angle 3.00/TCH 32)

*LNAV only.

CATEGORY	A	B	C	D
LPV DA	2801-1	255 (300-1)		NA
LNAV/VNAV DA	3191-2 ¼	645 (700-2 ¼)		NA
LNAV MDA	3180-1	634 (700-1)		NA
CIRCLING	3180-1	643 (700-1)		NA

REIL Rwy 14 0

MIRL Rwy 14-32 0