

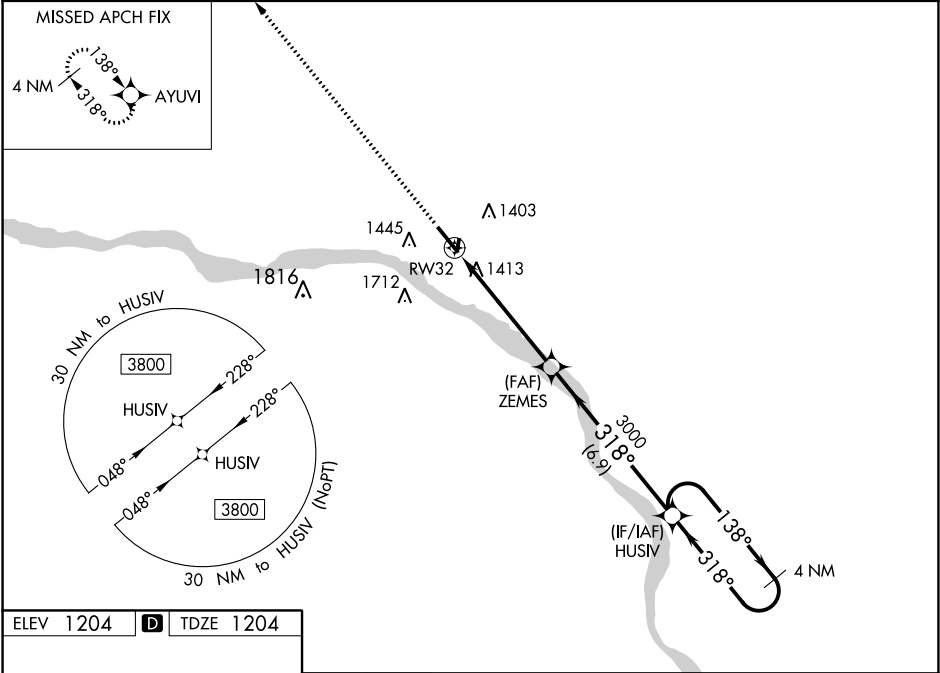
WAAS CH 77635 W32A	APP CRS 318°	Rwy Idg 4650 TDZE 1204 Apt Elev 1204
--	------------------------	---

RNAV (GPS) RWY 32
FREMONT MUNI (F'E'T')

⚠ For uncompensated Baro-VNAV systems, LNAV/VNAV NA below -17°C (2°F) or above 54°C (130°F).
DME/DME RNP-0.3 NA. Helicopter visibility reduction below 1 SM NA. When local altimeter setting not received, use Blair altimeter setting and increase all DA/MDA 60 feet; increase LNAV Cat C visibility ½ mile, and LNAV/VNAV visibility ¼ mile all Cats. Baro-VNAV and VDP NA when using Blair altimeter setting.

MISSED APPROACH:
Climb to 3300 direct AYUVI and hold.

AWOS-3 121.275	OMAHA APP CON 120.1 354.05	UNICOM 122.8 (CTAF) 📶
--------------------------	--------------------------------------	--



ELEV 1204 **D** TDZE 1204

REIL Rwy 14 **📶**
MIRL Rwy 14-32

3300 AYUVI

*LNAV only

*1.4 NM to RW32

RW32

ZEMES

3000

HUSIV

4 NM Holding Pattern

138° → 3800

← 318°

GP 3.00°
TCH 40

1.4 NM 4.1 NM 6.9 NM

CATEGORY	A	B	C	D
LPV DA	1456-1 252 (300-1)			NA
LNAV/VNAV DA	1712-1¾ 508 (600-1¾)			NA
LNAV MDA	1680-1	476 (500-1)	1680-1⅝ 476 (500-1⅝)	NA
C CIRCLING	1760-1	556 (600-1)	2020-2½ 816 (900-2½)	NA

NC-2, 03 DEC 2020 to 31 DEC 2020

NC-2, 03 DEC 2020 to 31 DEC 2020