

WAAS CH <b>82403</b> <b>W14A</b>	APP CRS <b>138°</b>	Rwy Idg TDZE Apt Elev	<b>4650</b> <b>1204</b> <b>1204</b>
--	------------------------	-----------------------------	---

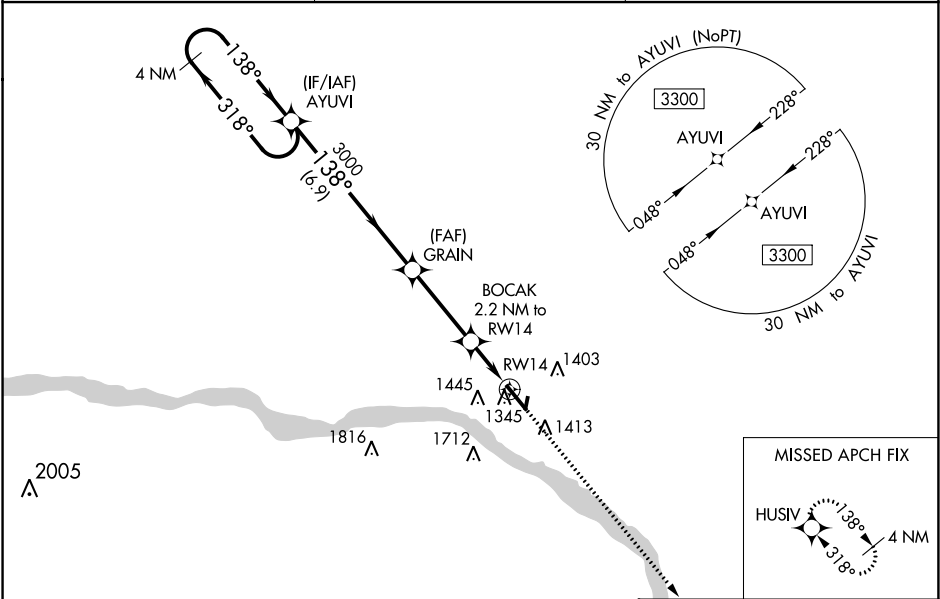
RNAV (GPS) RWY 14  
FREMONT MUNI (F'ET)

**⚠** For uncompensated Baro-VNAV systems, LNAV/VNAV NA below -17°C (2°F) or above 54°C (130°F). DME/DME RNP-0.3 NA. Helicopter visibility reduction below 1 SM NA.

**⚠** When local altimeter setting not received, use Blair altimeter setting and increase all DA/MDA 60 feet; increase LNAV/VNAV all Cats visibility 1/8 mile, and LNAV Cat C visibility 1/4 mile. Baro-VNAV and VDP NA when using Blair altimeter setting.

**MISSED APPROACH:**  
Climb to 3800 direct HUSIV and hold.

AWOS-3 <b>121.275</b>	OMAHA APP CON <b>120.1 354.05</b>	UNICOM <b>122.8 (CTAF) 0</b>
--------------------------	--------------------------------------	---------------------------------



**ELEV 1204** **D** **TDZE 1204**

4 NM Holding Pattern AYUVI

3300 ← 318° 138° →

GP 3.00° TCH 40

3000

GRAIN 3000

BOCAK 2.2 NM to RW14

\*1.1 NM to RW14

RW14

\*1940

\*LNAV only

3800 HUSIV

138° to RW14

635° X 100

1260

REIL Rwy 14 0

MIRL Rwy 14-32

CATEGORY	A	B	C	D
LPV DA	1454-1	250 (300-1)		NA
LNAV/ VNAV DA	1496-1	292 (300-1)		NA
LNAV MDA	1600-1	396 (400-1)	1600-1 1/8 396 (400-1 1/8)	NA
<b>C</b> CIRCLING	1760-1	556 (600-1)	2020-2 1/2 816 (900-2 1/2)	NA

NC-2, 03 DEC 2020 to 31 DEC 2020

NC-2, 03 DEC 2020 to 31 DEC 2020