

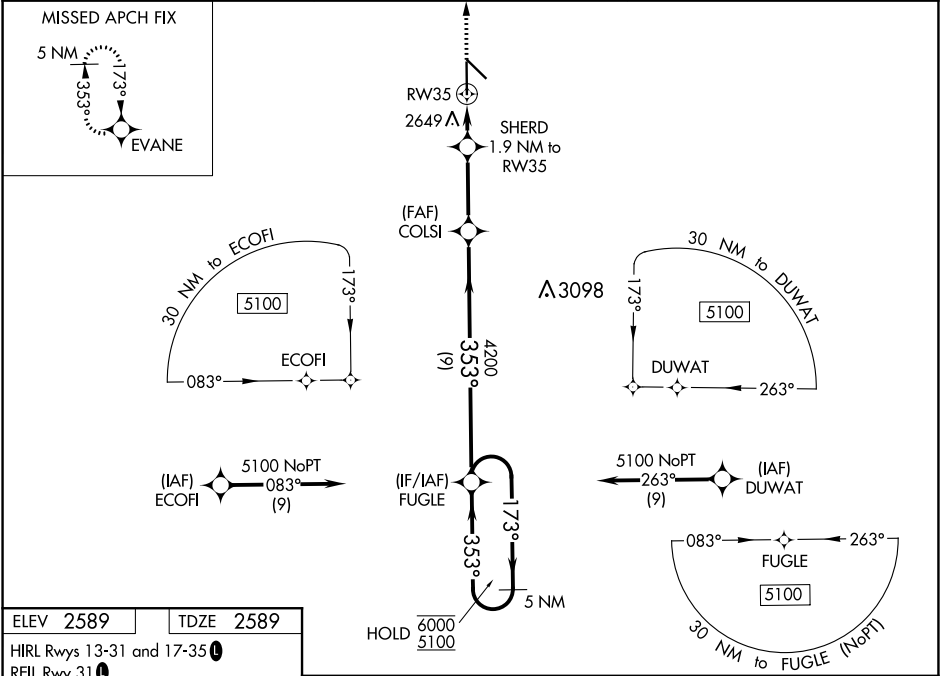
WAAS CH 81917 W35A	APP CRS 353°	Rwy Idg TDZE 2589 Apt Elev 2589
--	------------------------	---

RNAV (GPS) RWY 35

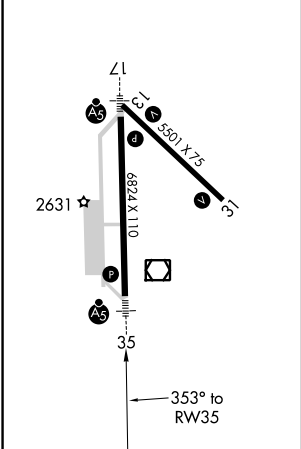
AINSWORTH RGNL (ANW)


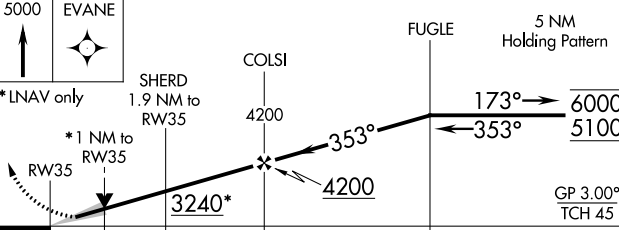
RNP APCH.	MALSR	MISSED APPROACH: Climb to 5000 direct EVANE and hold.
▼ ▲ For uncompensated Baro-VNAV systems, LNAV/VNAV NA below -20°C or above 54°C. For inop ALS, increase LNAV/VNAV all Cats visibility to ¾ SM and LNAV Cats C and D visibility to 1 SM.	AS	

AWOS-3 118.325	DENVER CENTER 127.95 338.2	UNICOM 122.8 (CTAF) 1
--------------------------	--------------------------------------	---------------------------------



ELEV 2589	TDZE 2589
HIRL Rwy 13-31 and 17-35 1	
REIL Rwy 31 1	



5000 ↑ EVANE					
					
* LNAV only					
* 1 NM to RW35					
SHERD 1.9 NM to RW35					
COLSI 4200					
FUGLE					
5 NM Holding Pattern					
173° → 6000 ← 353° 5100					
GP 3.00° TCH 45					
CATEGORY	A		B	C	D
LPV DA	2789-½		200 (200-½)		
LNAV/VNAV DA	2839-½		250 (300-½)		
LNAV MDA	2960-½ 371 (400-½)		2960-⅝ 371 (400-⅝)		
CIRCLING	3000-1 411 (500-1)	3040-1 451 (500-1)	3040-1½ 451 (500-1½)	3200-2 611 (700-2)	