

WAAS CH 56504 W36A	APP CRS 356°	Rwy Idg 4403 TDZE 918 Apt Elev 918
--	------------------------	---

RNAV (GPS) RWY 36

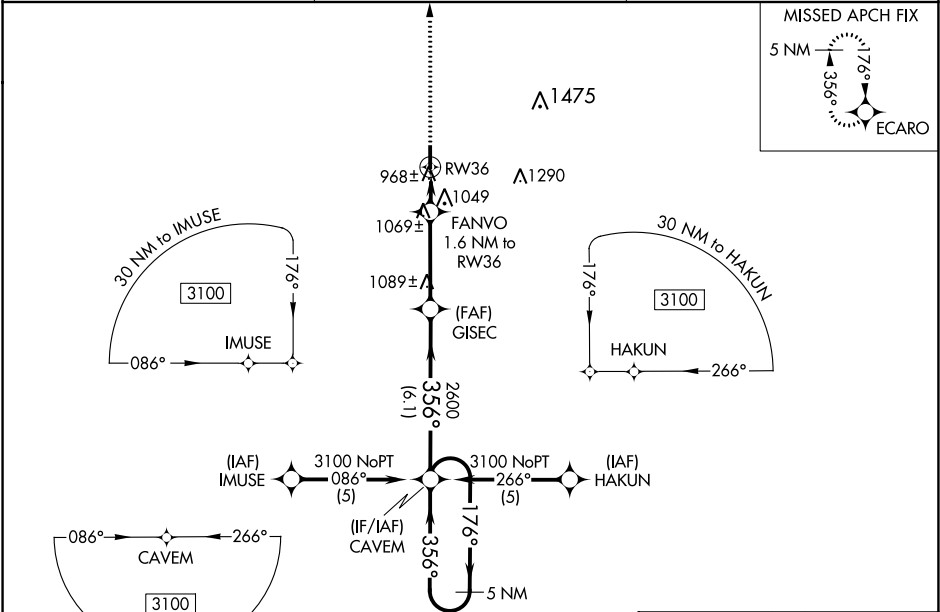
FORT SCOTT MUNI (F'SK)

NA

If local altimeter setting not received, use Chanute altimeter setting and increase all DAs 93 feet and all MDAs 100 feet. Baro-VNAV NA when using Chanute altimeter setting. For uncompensated Baro-VNAV systems, LNAV/VNAV NA below -16°C (4°F) or above 47°C (116°F). DME/DME RNP-0.3 NA. Visibility reduction by helicopters NA.

MISSED APPROACH: Climb to 3000 direct ECARO and hold.

AWOS-3 124.425	KANSAS CITY CENTER 125.55 327.0	UNICOM 122.8 (CTAF)
--------------------------	---	-------------------------------



3000

ECARO

*LNAV only

FANVO

1.6 NM to RW36

RW36

1460*

1.6 NM

3.5 NM

6.1 NM

GISEC

CAVEM

5 NM Holding Pattern

3100

176°

356°

356°

2600

356°

GP 3.00°

TCH 39

CATEGORY	A	B	C	D
LPV DA	1189-1 271 (300-1)			
LNAV/ VNAV DA	1240-1¼ 322 (400-1¼)			
LNAV MDA	1320-1 402 (500-1)	1320-1¼ 402 (500-1¼)		
CIRCLING	1320-1 402 (500-1)	1380-1 462 (500-1)	1380-1½ 462 (500-½)	1480-2 562 (600-2)

ELEV 918

TDZE 918

REIL Rwy 18 and 36

MIRL Rwy 18-36

81

4403 X 75

0.3% UP

36

356° to RW36

FORT SCOTT, KANSAS
Orig 30AUG07

37°48'N-94°46'W

FORT SCOTT MUNI (F'SK)

RNAV (GPS) RWY 36

NC-2, 03 DEC 2020 to 31 DEC 2020

NC-2, 03 DEC 2020 to 31 DEC 2020