

LOC I-CAC <u>111.7</u>	APP CRS 174°	Rwy Idg 6705 TDZE 1530 Apt Elev 1533
----------------------------------	------------------------	---

ILS or LOC RWY 17
NEWTON-CITY-COUNTY (EWK)

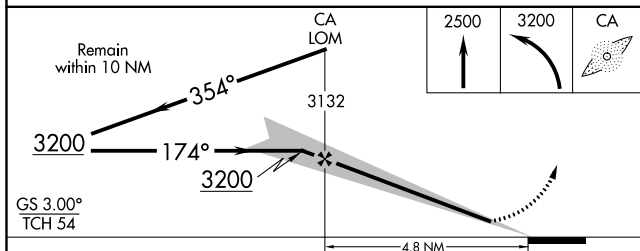
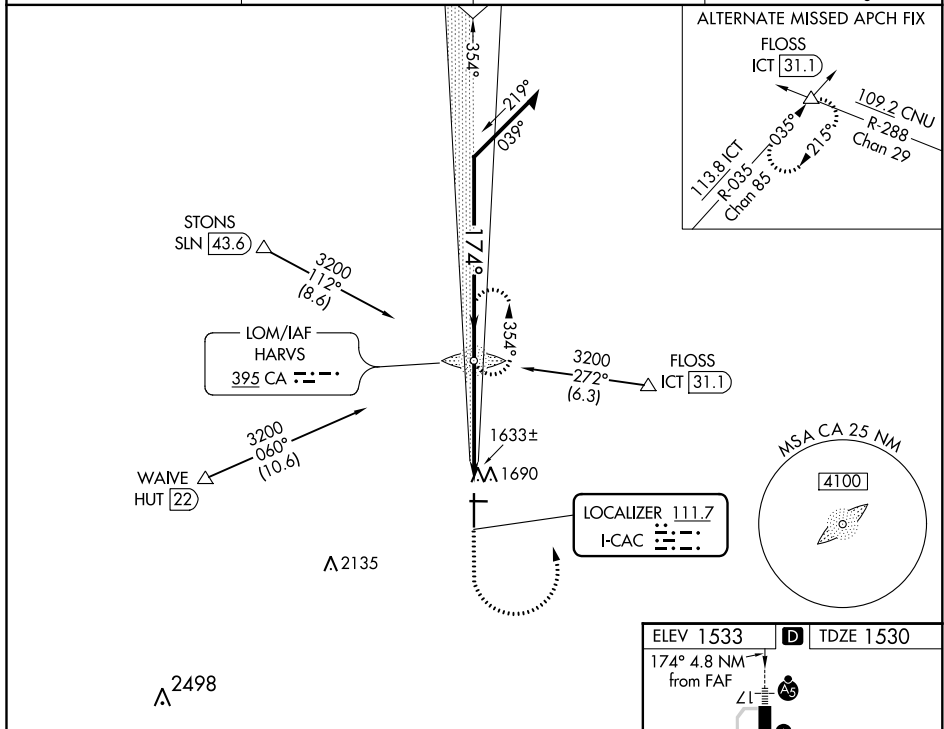
ADF required for Procedure entry. ADF required.

▼ When local altimeter setting not received, use Wichita Dwight D Eisenhower National altimeter setting: increase S-ILS 17 to 1830 feet; increase all MDAs 100 feet and visibility S-LOC 17 Cat C ½ SM and S-LOC 17 Cat D ¼ SM. For inop ALS, increase S-LOC 17 Cat C/D visibility to 1 SM. Circling Rwy 8, 26 NA at night. For inop ALS when using Wichita Dwight D Eisenhower National altimeter setting, increase S-ILS 17 visibility to ½ SM and S-LOC 17 Cat C/D to 1 ½ SM.

MALSR

MISSED APPROACH:
Climb to 2500 then
climbing left turn to
3200 direct HARVS
LOM and hold.

AWOS-3PT 123.875	WICHITA APP CON 125.5 306.2	CLNC DEL 126.55	UNICOM 123.0 (CTAF) 0
----------------------------	---------------------------------------	---------------------------	---------------------------------



CATEGORY	A	B	C	D
S-ILS 17	1730-½ 200 (200-½)			
S-LOC 17	1900-½ 370 (400-½)		1900- ⁵ / ₈ 370 (400- ⁵ / ₈)	1900-¾ 370 (400-¾)
CIRCLING	2000-1 467 (500-1)		2000-1½ 467 (500-1½)	2100-2 567 (600-2)

