

APP CRS	Rwy Idg	5700
149°	TDZE	831
	Apt Elev	833

# RNAV (GPS) RWY 15

## LAWRENCE MUNI (LWC)

RNP APCH.

**T** Rwy 15 Helicopter visibility reduction below  $\frac{3}{4}$  SM NA.

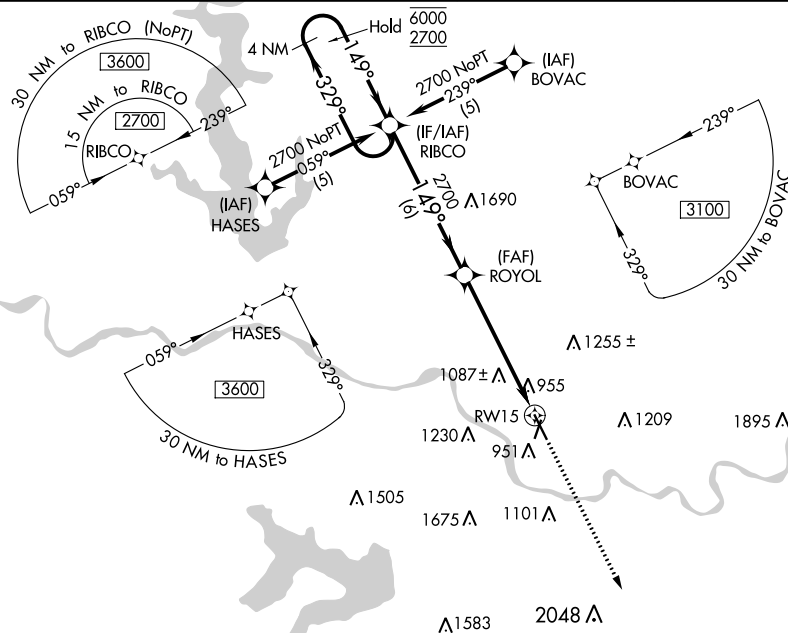
**MISSED APPROACH:** Climb to 3100 direct GOLEY and hold.

ASOS  
121.225

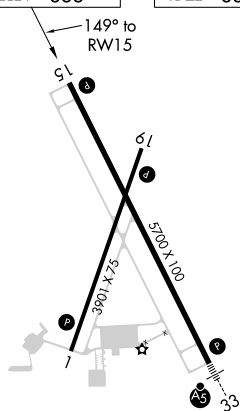
KANSAS CITY CENTER  
123.8 343.7

CLNC DEL  
**121.825**

UNICOM  
123.0 (CTAF) **L**



ELEV 833		TDZE 831
----------	--	----------

REIL Rwy 1, 15, and 19 **L**MIRL Rwy's 1-19 and 15-33 **L**

LAWRENCE, KANSAS

Orig-C 15AUG19

39°01'N-95°13'W

LAWRENCE MUNI (LWC)  
RNAV (GPS) RWY 15

NC-2, 03 DEC 2020 to 31 DEC 2020