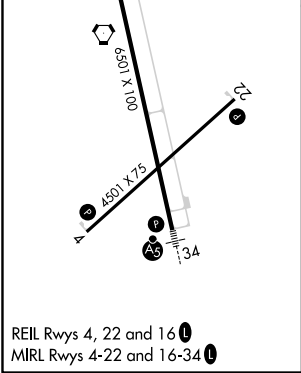
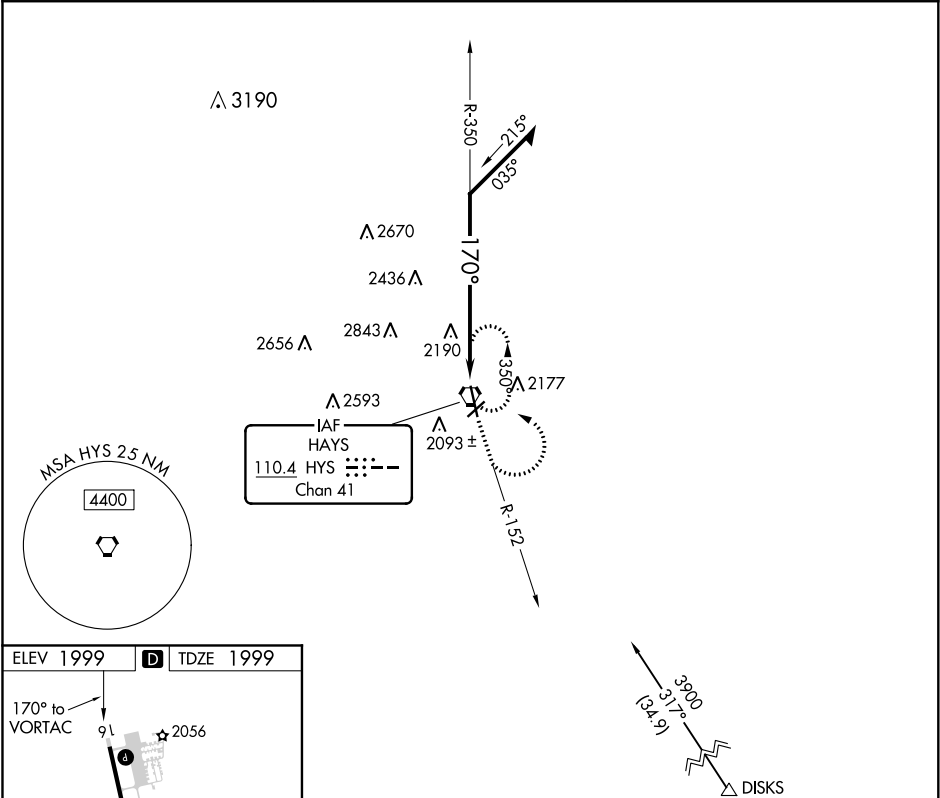


VORTAC HYS 110.4 Chan 41	APP CRS 170°	Rwy Idg TDZE Apt Elev	6501 1999 1999
--	------------------------	-----------------------------	---

VOR RWY 16
HAYS RGNL (HYS)

<p>⚠ When local altimeter setting not received, use Russell altimeter setting and increase all MDA 80 feet, increase S-16 and Circling Cats B, C and D visibility ¼ mile. Visibility reduction by helicopters NA.</p>	<p>MISSED APPROACH: Climb to 3800 via HYS R-152 then climbing left turn to 3900 direct HYS VORTAC and hold.</p>
--	--

AWOS-3PT 125.525	KANSAS CITY CENTER 124.4 322.4	UNICOM 122.8 (CTAF) 0
----------------------------	--	---------------------------------



ELEV 1999 D TDZE 1999			
170° to VORTAC			
REIL Rws 4, 22 and 16 0 MIRL Rws 4-22 and 16-34 0			
Remain within 10 NM			
HYS VORTAC			
3900			
350°			
170°			
DISKS			
3800			
3900			
HYS			
HYS R-152			
CATEGORY	A	B	C
S-16	2700-1	701 (800-1)	2700-2
CIRCLING	2700-1	701 (800-1)	2700-2

NC-2, 03 DEC 2020 to 31 DEC 2020

NC-2, 03 DEC 2020 to 31 DEC 2020