

WAAS CH 90519 W04A	APP CRS 040°	Rwy Idg TDZE 1990 Apt Elev 1999
----------------------------------------	------------------------	-----------------------------------------------------

RNAV (GPS) RWY 4

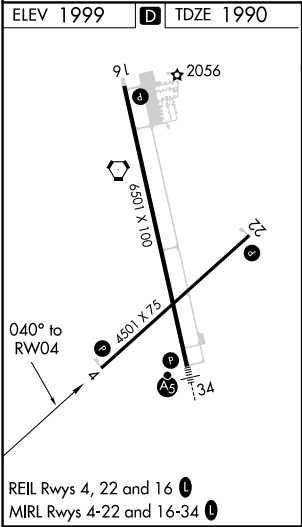
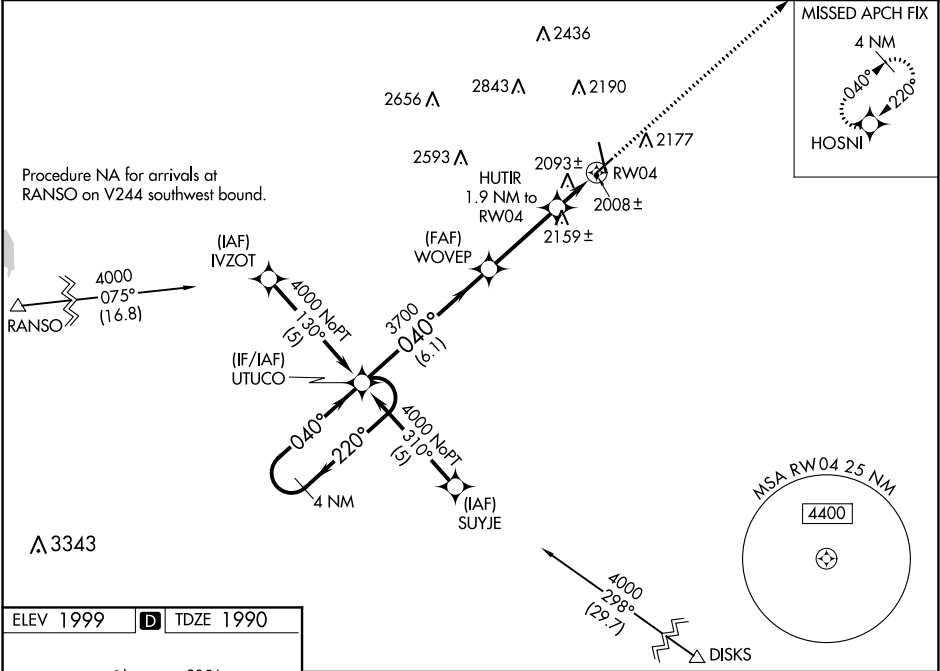
HAYS RGNL (HYS)

⚠

For uncompensated Baro-VNAV systems, LNAV/VNAV NA below -18°C (0°F) or above 45°C (113°F). DME/DME RNP-0.3 NA. Visibility reduction by helicopters NA. When local altimeter setting not received, use Russell altimeter setting and increase all DA 69 feet and all MDA 80 feet, increase LPV and LNAV/VNAV all Cnts visibility ¼ mile and LNAV Cat C visibility ¼ mile. Baro-VNAV NA when using Russell altimeter setting.

MISSED APPROACH:
Climb to 4000 direct HOSNI and hold.

AWOS-3PT 125.525	KANSAS CITY CENTER 124.4 322.4	UNICOM 122.8 (CTAF) 0
----------------------------	------------------------------------------	---------------------------------



4 NM Holding Pattern		UTUCO		4000		HOSNI	
4000		220°		040°		↑	
GP 3.00°		TCH 40		WOVEP		HUTIR 1.9 NM to RW04	
				3700		*2620	
				6.1 NM		3.3 NM	
						1.9 NM	
CATEGORY	A		B		C		D
LPV DA	2240-1		250 (300-1)				
LNAV/VNAV DA	2278-1		288 (300-1)				
LNAV MDA	2420-1	430 (500-1)	2420-1½	430 (500-1½)	2420-1½	430 (500-1½)	
CIRCLING	2440-1	441 (500-1)	2480-1	481 (500-1)	2480-1½	481 (500-1½)	2560-2
							561 (600-2)