

WAAS CH 50118 W12A	APP CRS 123°	Rwy Idg 5698 TDZE 2583 Apt Elev 2583
--	------------------------	---

RNAV (GPS) RWY 12

MC COOK BEN NELSON RGNL (MCK)

⚠

⚠

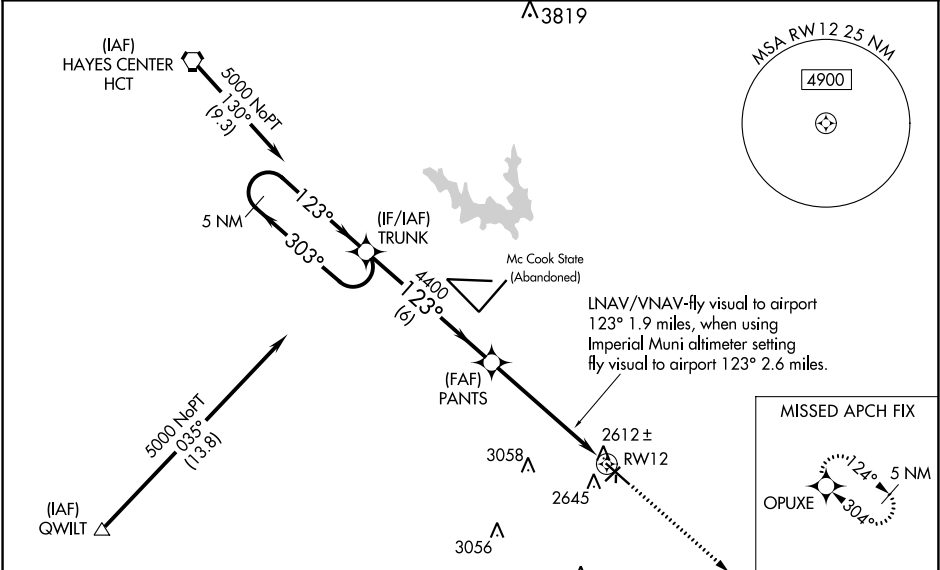
Circling NA to Rwy 17 and 35. For uncompensated Baro-VNAV systems, LNAV/VNAV NA below -20°C (-4°F) or above 54°C (130°F). Baro-VNAV and VDP NA when using Imperial Muni altimeter setting. For inoperative MALSR, increase LPV all Cats visibility to 1 $\frac{3}{4}$ and LNAV visibility Cat A to 1. Inoperative table does not apply to LNAV/VNAV. When local altimeter setting not received, use Imperial Muni altimeter setting and increase all DAs 213 feet, and LPV all Cats visibility $\frac{3}{4}$ mile, LNAV/VNAV Cat C visibility $\frac{1}{2}$ mile; increase all MDAs 220 feet, and LNAV and Circling visibility Cats A and B $\frac{1}{4}$ mile, Cat C 1 mile.

MALSR

MISSED APPROACH:

Climb to 5000 direct OPUXE and hold.

ASOS 119.025	DENVER CENTER 132.7 226.675	UNICOM 122.8 (CTAF) 0
------------------------	---------------------------------------	---------------------------------



ELEV 2583	D	TDZE 2583
-----------	----------	-----------

5 NM Holding Pattern

5000

GP 3.00° TCH 39

TRUNK

303°

123°

123°

PANTS

4400

6 NM

3.7 NM

1.8 NM

5000

OPUXE

*LNAV only

1.8 NM to RW12

RW12

CATEGORY	A	B	C	D
LPV DA	2840- $\frac{1}{2}$	257 (300- $\frac{1}{2}$)		NA
LNAV/VNAV DA	3240-2	657 (700-2)		NA
LNAV MDA	3180- $\frac{1}{2}$	597 (600- $\frac{1}{2}$)	3180-1 597 (600-1)	NA
CIRCLING	3180-1	597 (600-1)	3180-1 $\frac{1}{2}$ 597 (600-1 $\frac{1}{2}$)	NA

