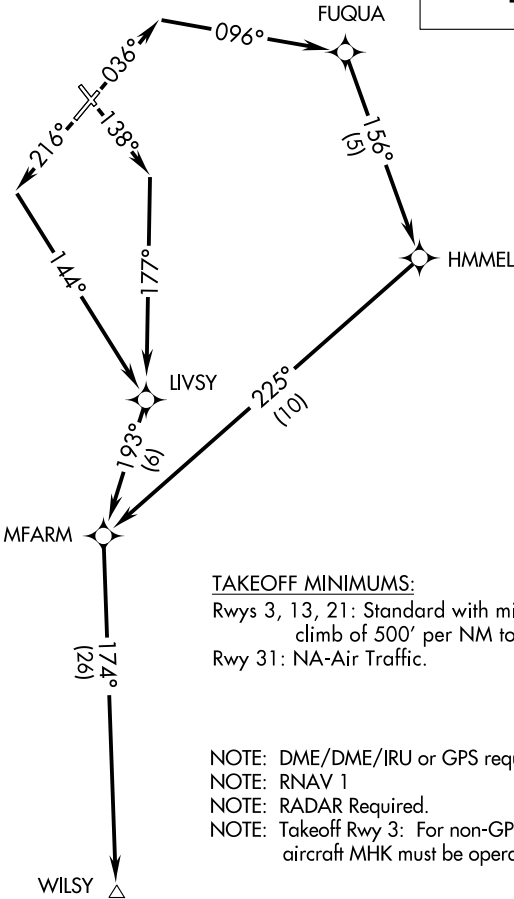


ASOS 119.075  
GND CON 121.85  
MANHATTAN TOWER ★  
118.55 (CTAF)  
MARSHALL AAF GCA ★  
121.25 254.35  
KANSAS CITY CENTER  
127.35 257.975

TOP ALTITUDE:  
4000



TAKEOFF MINIMUMS:  
Rwys 3, 13, 21: Standard with minimum  
climb of 500' per NM to 1600.  
Rwy 31: NA-Air Traffic.

NOTE: DME/DME/IRU or GPS required.  
NOTE: RNAV 1  
NOTE: RADAR Required.  
NOTE: Takeoff Rwy 3: For non-GPS equipped  
aircraft MHK must be operational.

NOTE: Chart not to scale.



DEPARTURE ROUTE DESCRIPTION

TAKEOFF RWY 3: Climb heading 036° to intercept course 096° to FUQUA, then on track 156° to HMMEL, then on track 225° to MFARM. thence. . . .  
TAKEOFF RWY 13: Climb heading 138° to intercept course 177° to LIVSY, then on track 193° to MFARM. thence. . . .  
TAKEOFF RWY 21: Climb heading 216° to intercept course 144° to LIVSY, then on track 193° to MFARM. thence. . . .

. . . .on track 174° to WILSY. Maintain 4000 or as assigned by ATC. Expect filed altitude ten minutes after departure.

LOST COMMUNICATIONS: Standard