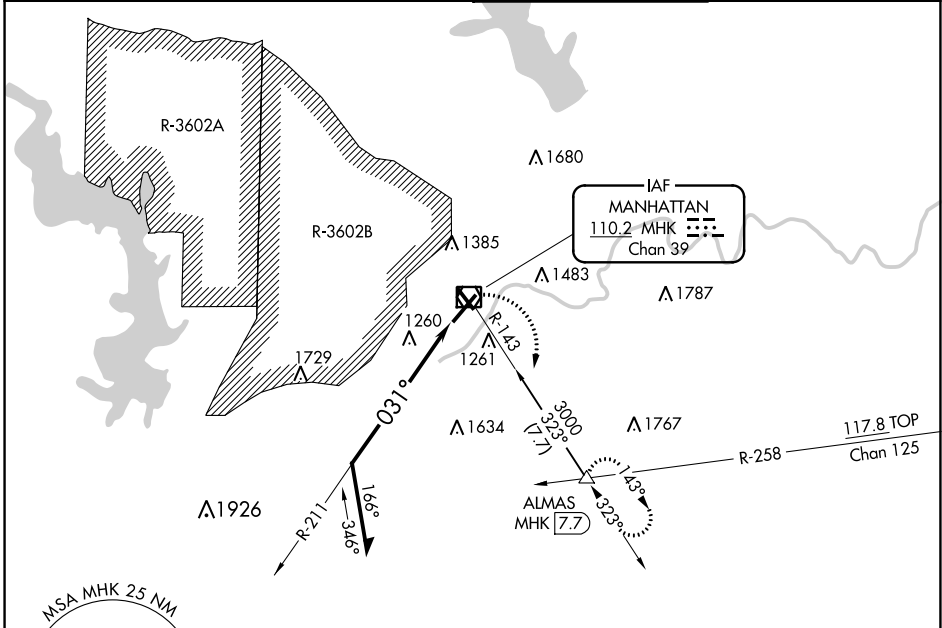


VOR/DME MHK	APP CRS	Rwy Idg	7000
110.2	031°	TDZE	1056
Chan 39		Apt Elev	1066

VOR RWY 3  
MANHATTAN RGNL (MHK)

<p><b>V</b> Visibility reduction by helicopters NA. Circling NA west of Rwy 3-21. When local altimeter setting not received, use Marshall AAF altimeter setting and increase all MDA 20 feet. VDP NA with Marshall AAF altimeter setting.</p>	<p><b>MALSR</b></p> <p><b>A5</b></p>	<p><b>MISSED APPROACH:</b> Climbing right turn to 3000 via MHK VOR/DME R-143 to ALMAS INT/MHK 7.7 DME and hold.</p>
---	--------------------------------------	---

ASOS 119.075	MARSHALL GCA ★ 121.25 254.35	MANHATTAN TOWER ★ 118.55 (CTAF) 0	GND CON 121.85
-----------------	---------------------------------	--------------------------------------	-------------------



3100

ELEV 1066

D

TDZE 1056

Remain  
within 10 NM

MHK  
VOR/DME

3000

ALMAS

VGSI and descent angles not coincident  
(VGSI Angle 3.00/TCH 50).

2900

MHK  
3.2

2.2 NM 1 NM

CATEGORY

A

B

C

D

S-3

1820-1

764 (800-1)

1820-1 $\frac{3}{4}$   
764 (800-1 $\frac{3}{4}$ )

1820-2  
764 (800-2)

CIRCLING

1820-1  
754 (800-1)

1820-1 $\frac{1}{4}$   
754 (800-1 $\frac{1}{4}$ )

1820-2 $\frac{1}{4}$   
754 (800-2 $\frac{1}{4}$ )

1820-2 $\frac{1}{2}$   
754 (800-2 $\frac{1}{2}$ )

031° to  
VOR/DME

TWR  
1111

HIRL Rwy 3-21 <sup>1</sup>

MIRL Rwy 13-31 <sup>1</sup>

REIL Rwy 21 and 31 <sup>1</sup>

NC-2, 03 DEC 2020 to 31 DEC 2020

NC-2, 03 DEC 2020 to 31 DEC 2020