

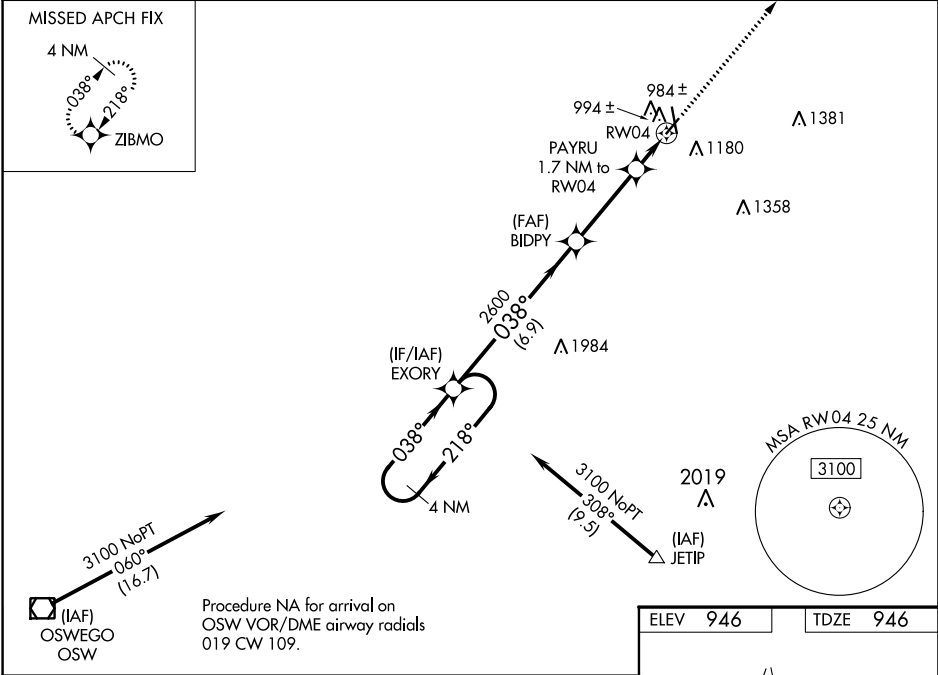
WAAS CH <b>53430</b> <b>W04A</b>	APP CRS <b>038°</b>	Rwy Idg <b>4000</b> TDZE <b>946</b> Apt Elev <b>946</b>
--	------------------------	---

RNAV (GPS) RWY 4  
ATKINSON MUNI (PTS)

**⚠** For uncompensated Baro-VNAV systems, LNAV/VNAV NA below -16°C (4°F) or above 54°C (130°F). DME/DME RNP-0.3 NA. Baro-VNAV and VDP NA with Joplin altimeter setting. When local altimeter setting not received, use Joplin altimeter setting and increase all DA 53 feet and all MDA 60 feet, and increase LPV all Cats, LNAV/VNAV all Cats and LNAV Cat C visibility 1/8 mile, and Circling Cat C visibility 1/4 mile.

**MISSED APPROACH:**  
Climb to 3000 direct ZIBMO and hold.

AWOS-3 <b>118.775</b>	KANSAS CITY CENTER <b>128.6 282.325</b>	GCO <b>121.725</b>	UNICOM <b>123.0 (CTAF)</b> <b>📻</b>
--------------------------	--	-----------------------	--



4 NM Holding Pattern		EXORY	BIDPY	PAYRU 1.7 NM to RW04	3000 ZIBMO
3100 ← 218°		→ 038°	038°	2600	* LNAV only
GP 3.00°				* 1 NM to RW04	
TCH 40				* 1520	
		6.9 NM	3.4 NM	0.7 NM	1 NM
CATEGORY	A	B	C	D	
LPV DA	1196-7/8	250 (300-7/8)		NA	
LNAV/VNAV DA	1196-7/8	250 (300-7/8)		NA	
LNAV MDA	1300-1	354 (400-1)		NA	
CIRCLING	1480-1	534 (600-1)	1520-1½ 574 (600-1½)	NA	

