

WAAS CH <b>93904</b> <b>W17A</b>	APP CRS <b>167°</b>	Rwy Idg TDZE <b>1864</b> Apt Elev <b>1864</b>
--	------------------------	---

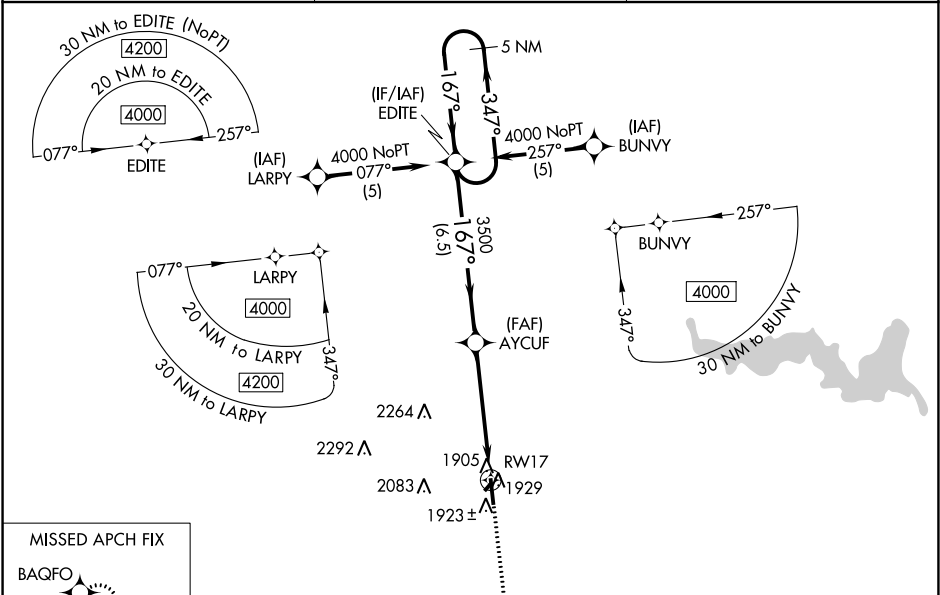
RNAV (GPS) RWY 17

RUSSELL MUNI (RSL)

**⚠** Baro-VNAV and VDP NA when using Hays altimeter setting. For uncompensated Baro-VNAV systems, LNAV/VNAV NA below -18°C (0°F) or above 54°C (130°F). DME/DME RNP-0.3 NA. Helicopter visibility reduction below ¾ SM NA. When local altimeter setting not received, use Hays altimeter setting: increase LPV DA all Cats to 2186 feet, LNAV/VNAV all Cats DA to 2244 feet and all visibilities ¼ mile; increase all MDA 80 feet and LNAV Cat C visibility ¼ mile. Circling NA to Rwy's 3 and 21.

MISSED APPROACH:  
Climb to 4000 direct  
BAQFO and hold.

ASOS <b>128.325</b>	KANSAS CITY CENTER <b>124.4 322.4</b>	UNICOM <b>122.7 (CTAF) 0</b>
------------------------	--	---------------------------------



MISSED APCH FIX  
BAQFO

BISON MOA

ELEV 1864 TDZE 1864

167° to RWY 17

1890

2964

4000

BAQFO

5 NM Holding Pattern

VGSIs and RNAV glidepath not coincident (VGSIs Angle 3.00/TCH 41).

EDITE

AYCUF

GP 3.00° TCH 36

4000

347°

167°

167°

3500

6.5 NM

4 NM

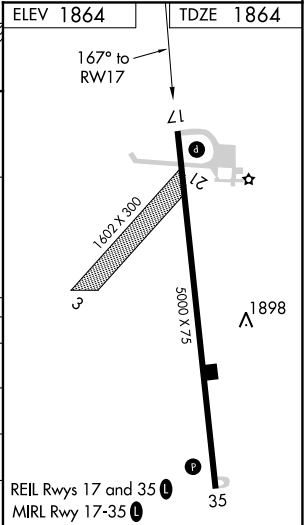
1 NM

RWY 17

\* 1 NM to RWY 17

\* LNAV only.

CATEGORY	A	B	C	D
LPV DA	2117-1	253 (300-1)		NA
LNAV/VNAV DA	2175-1½	311 (400-1½)		NA
LNAV MDA	2220-1	356 (400-1)		NA
CIRCLING	2240-1 376 (400-1)	2320-1 456 (500-1)	2320-1½ 456 (500-1½)	NA



NC-2, 03 DEC 2020 to 31 DEC 2020

NC-2, 03 DEC 2020 to 31 DEC 2020